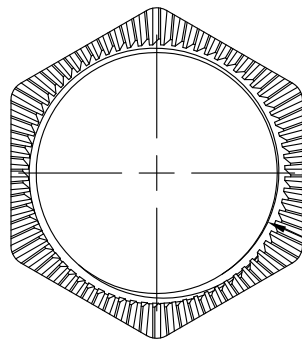
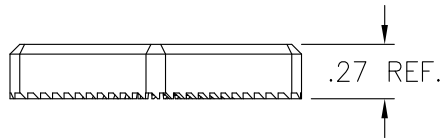


ISO VIEW FOR
REF. ONLY



Ø1.28 MAX.
Ø1.19 MIN.

PART NO. C02-1010-X (SALES)				
TITLE PLASTIC LOCKNUT - 1"-11 1/2 NPSM				
CUSTOMER STANDARD				
ENGLISH (in)				SCALE FULL
REV #	REVISION DETAILS	DATE	BY	APPROVE
0	INITIAL RELEASE ECN-11006	06-13 2012	RRR	KS
1	TITLE WAS BODY NUT (NYLON) 1"-11 1/2 NPSM DIM .27 WAS .28	02-19 2014	RR	KS
2	UPDATED NOTES ADDED .27 AS A REFERENCE DIM. ADDED DIM Ø1.28 MAX. & Ø1.19 MIN. ECO - 13274	06-08 2014	RR	JL

NOTES:

1. BODY MATERIAL: GLASS FILLED NYLON 33%
2. COLOR TO BE ADDED BY MOLDER, AND TO REMAIN CONSISTENT FROM RUN TO RUN:
C02-1010-B - BLACK
C02-1010-R - RED

A-SIZE: REV 03/02



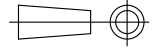
16830 Pheasant Drive
Brookfield, WI 53005

CONFIDENTIAL - The information contained in this document is the property of GEP Power Products. It is not for public disclosure. Possession of the information does not convey any right to loan, sell or disclose the information. Unauthorized reproduction or use of the information is prohibited. This document is to be returned to GEP Power Products upon completion of the purpose for which it is loaned or upon request.

COPYRIGHT - GEP Power Products
This is an unpublished work. The disclosure of this work is limited to a select personnel. Further dissemination or disclosure to the public is PROHIBITED. This unpublished work is protected by Federal Copyright law and all rights thereunder are reserved by GEP Power Products.

TOLERANCES UNLESS OTHERWISE SPECIFIED	
METRIC TOL	ENGLISH TOL
1 PL DEC.=±.25	2 PL DEC.=±.01
2 PL DEC.=±.13	3 PL DEC.=±.005

THIRD ANGLE PROJECTION



ANGULAR TOL= ± 2°
FRACTION TOL= ± 1/64 IN