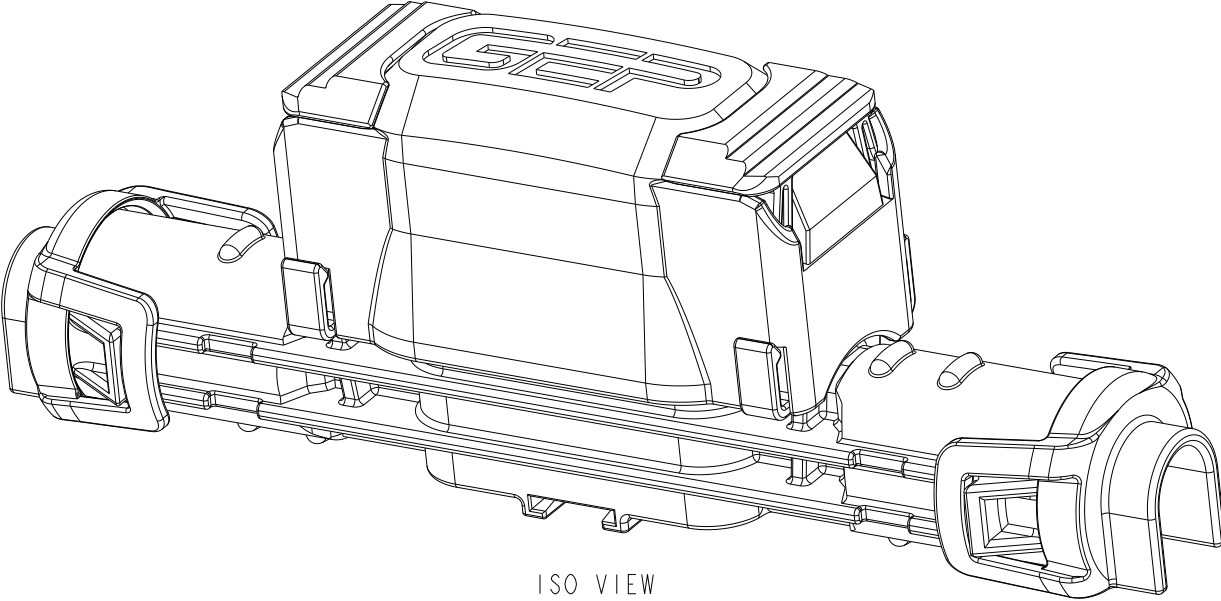


REV	REVISION DETAILS	ECO	DATE	BY	ABY
0	INITIAL RELEASE	NP-002670	06-12-2020	JWK	JJW



ISO VIEW
FOR REF ONLY

CONFIDENTIAL

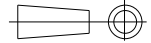
The information contained in this document is the property of GEP Power Products. It is not for public disclosure. Possession of the information does not convey any right to loan, sell or disclose the information. Unauthorized reproduction or use of the information is prohibited. This document is to be returned to GEP Power Products upon completion of the purpose for which it is loaned or upon request.

CRITICAL DIMENSIONS ON FEATURES TO BE CHECKED DURING ANY SET-UP ADJUSTMENTS, TOOL CHANGES, OR ANNUAL MAINTENANCE ON TOOLING.

DIMENSIONS OR FEATURES TO BE CHECKED FROM RUN-TO-RUN

TOLERANCES UNLESS OTHERWISE SPECIFIED

THIRD ANGLE PROJECTION



METRIC TOL

ENGLISH TOL

ANGULAR TOL = $\pm 2^\circ$
FRACTION TOL = $\pm 1/64$ IN

1 PL DEC. = $\pm .25$
2 PL DEC. = $\pm .13$

2 PL DEC. = $\pm .01$
3 PL DEC. = $\pm .005$

DIMENSIONS INSIDE PARENTHESES OR CONTAINING "REF" ARE FOR REFERENCE ONLY.

COPYRIGHT - GEP POWER PRODUCTS

This is unpublished work. The disclosure of this work is limited to a select personnel. Further dissemination or disclosure to the public is PROHIBITED. This unpublished work is protected by Federal Copyright law and all rights thereunder are reserved by GEP Power Products.

		16830 Pheasant Drive Brookfield, WI 53005		
PART NO:		JCASE HOLDER IN-LINE SERIES (SALES)		
DESCRIPTION:		JCASE HOLDER, IN-LINE SERIES DRAWING		
CUSTOMER:		STANDARD		
METRIC (MM)	REV	SHEET	SCALE	SIZE
	0	1 OF 4	1.5:1	B

1

2

3

4

5

A

B

C

D

E

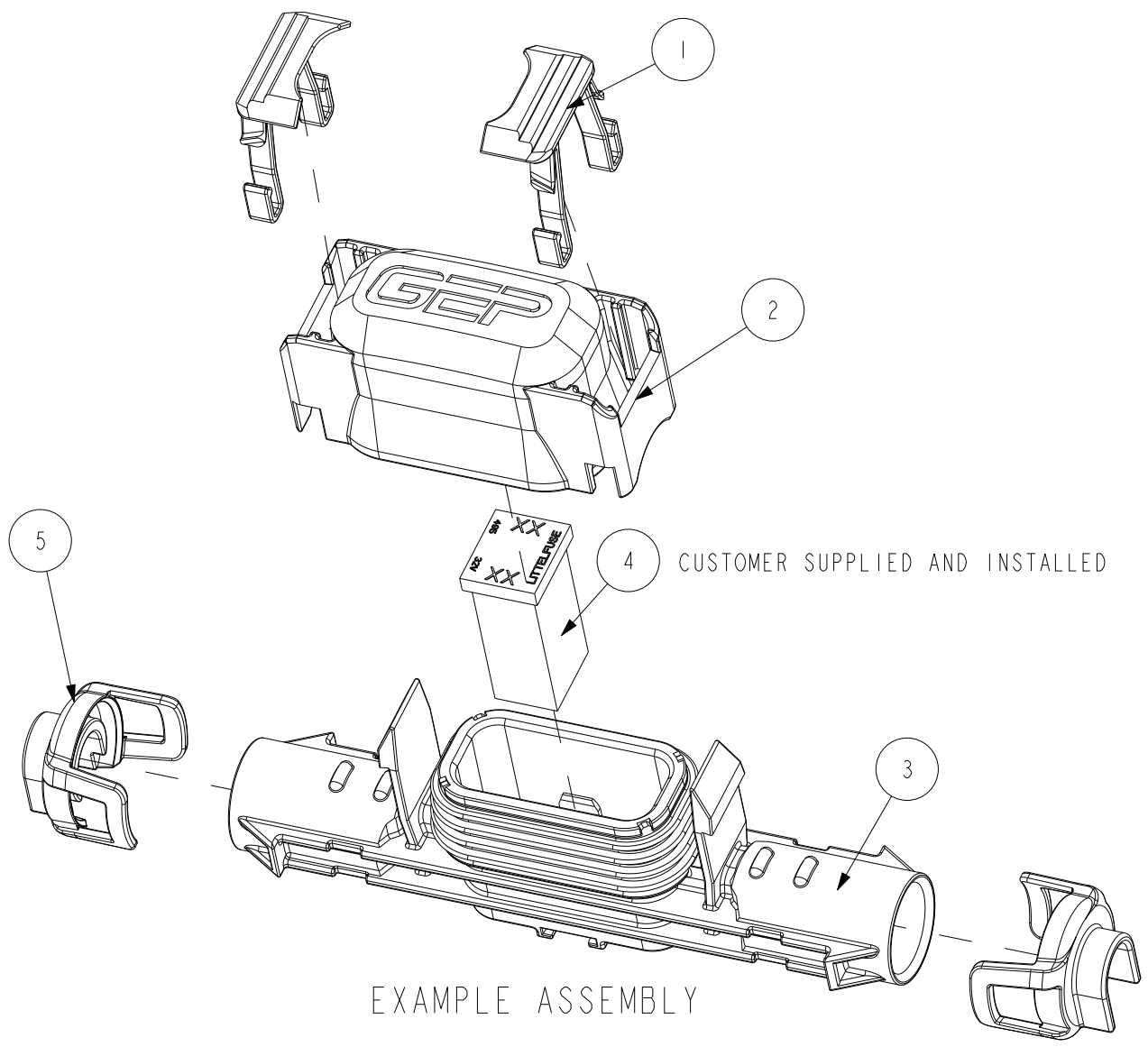
A

B

C

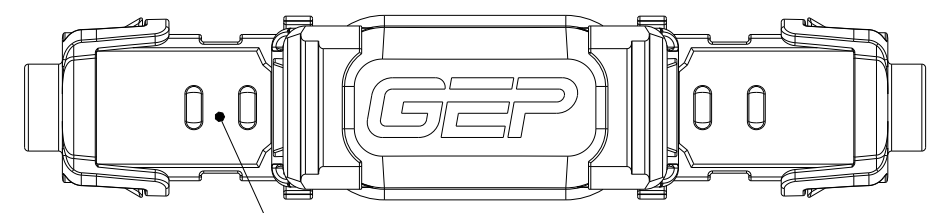
D

E

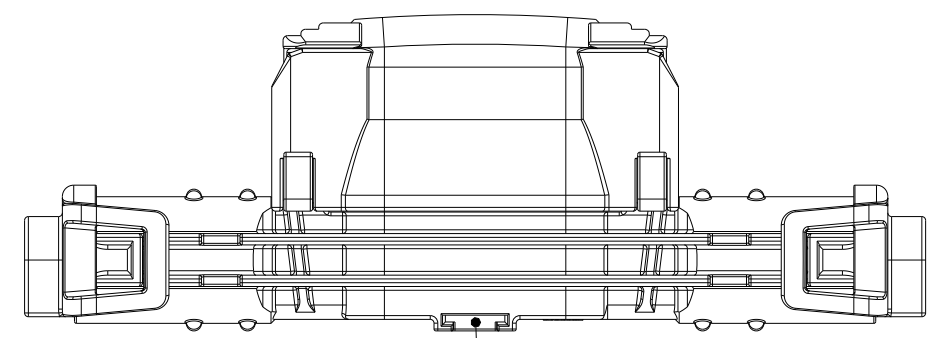


EXAMPLE ASSEMBLY

MOUNTING OPTIONS



CABLE TIE MOUNTING FEATURES
USE 4.8 MM, 3/16" WIDE CABLE TIES OR EQUIVALENT



SLOT FOR DELPHI/APTIV
PART NUMBER 12047835
OR EQUIVALENT TYPE MOUNTING CLIP

EXAMPLE ASSEMBLY BOM

ITEM	DESCRIPTION	PART NO.	QTY
1	CPA - JCASE HOLDER, IN-LINE	SC38-2005A-B003	2
2	COVER - JCASE HOLDER, IN-LINE	SC27-2003A-B001	1
3	HOUSING - JCASE HOLDER, IN-LINE, WITH COVER SEAL	SC50-2000A-A001	1
4	JCASE FUSE	SEE JCASE FUSE TABLE	1
5	TPA - JCASE HOLDER, IN-LINE	SC38-2004A-B003	2

CUSTOMER SUPPLIED AND INSTALLED

GEP POWER PRODUCTS 16830 Pheasant Drive
Brookfield, WI 53005

PART NO: JCASE HOLDER IN-LINE SERIES (SALES)

DESCRIPTION: JCASE HOLDER, IN-LINE SERIES DRAWING

CUSTOMER: STANDARD

METRIC (MM)	REV	SHEET	SCALE	SIZE
	0	2 OF 4	1:1	B

1

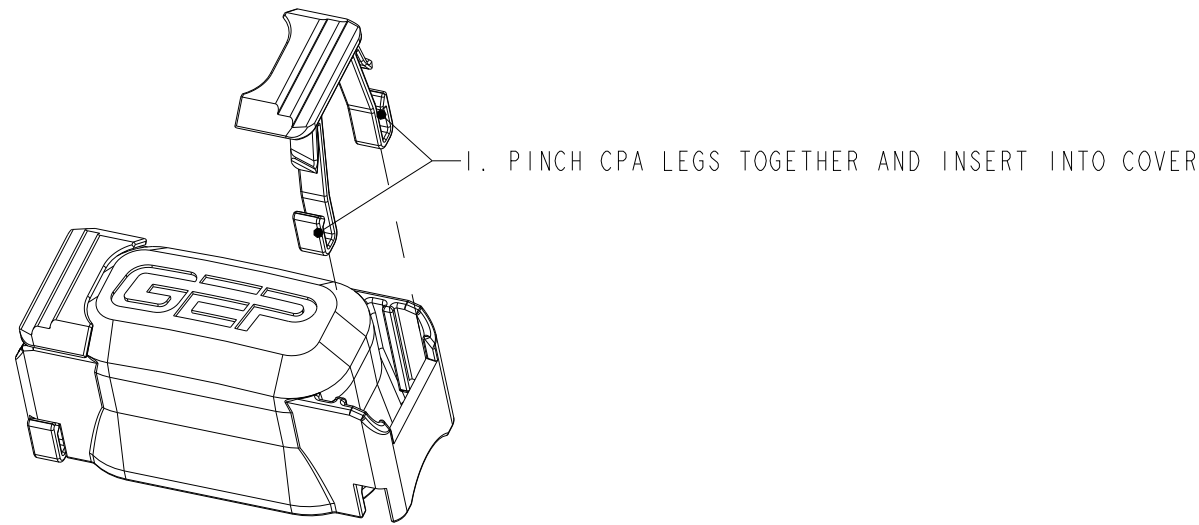
2

3

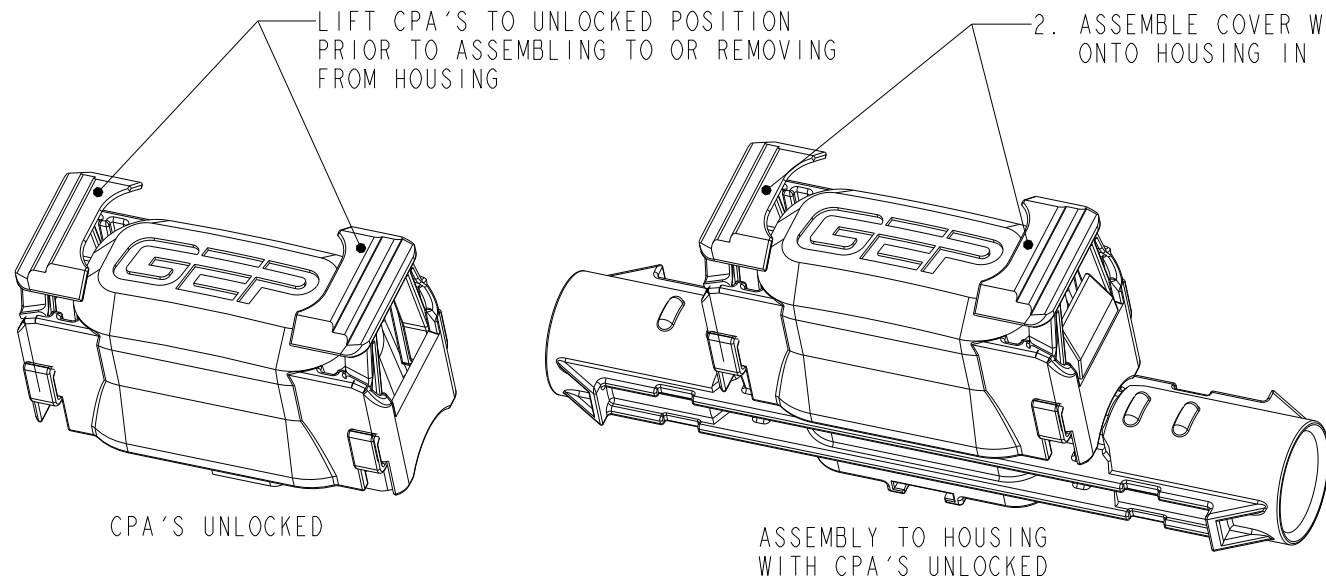
4

5

CPA INSTRUCTIONS



CPA INSTALLATION INTO COVER

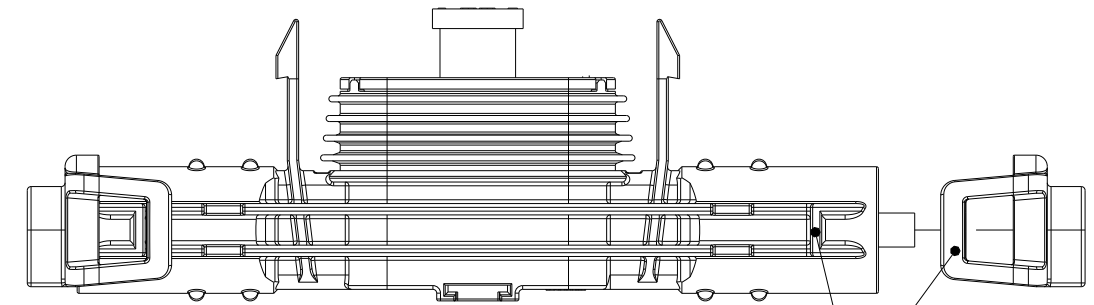


2. ASSEMBLE COVER WITH CPA'S ONTO HOUSING IN UNLOCKED POSITION.

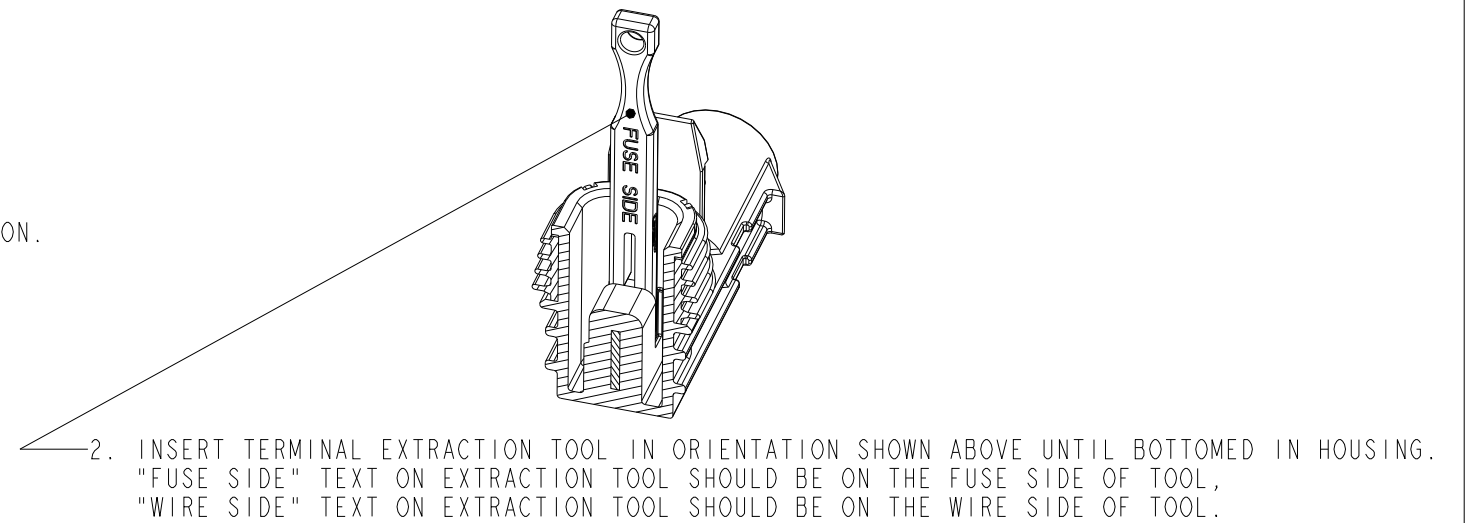
ASSEMBLY TO HOUSING WITH CPA'S UNLOCKED

CPA'S LOCKED

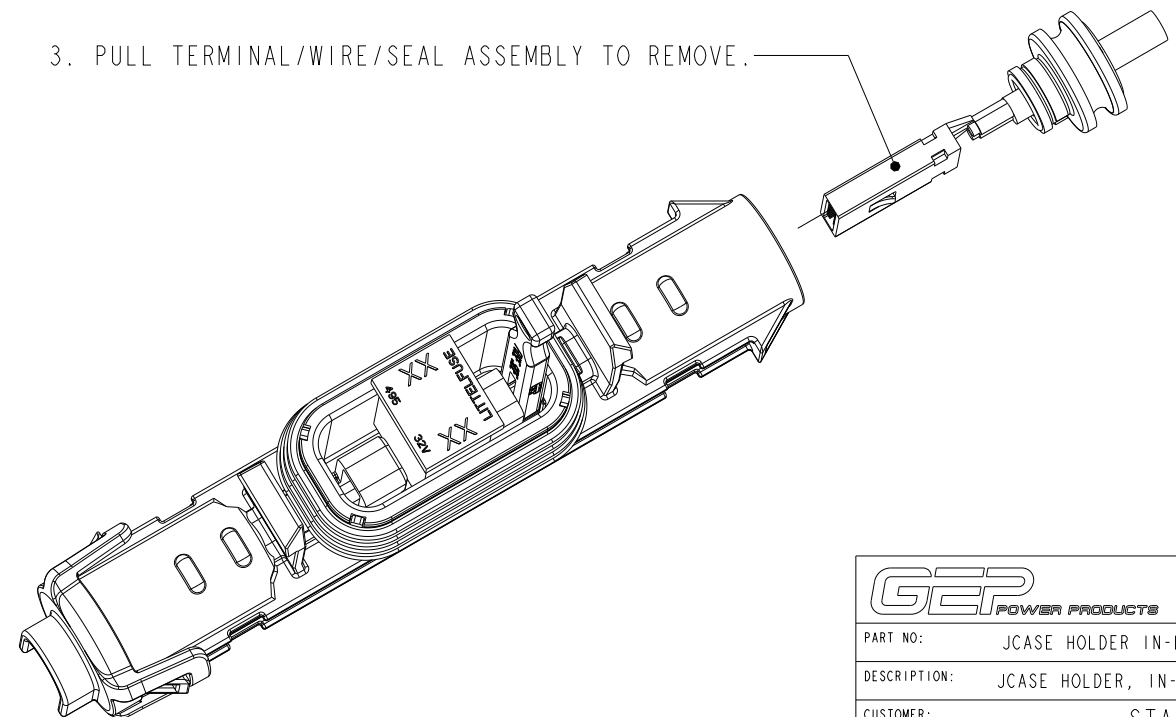
TERMINAL EXTRACTION INSTRUCTIONS



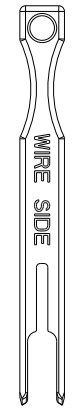
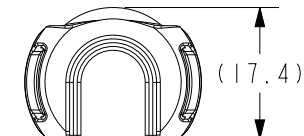
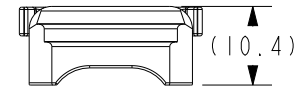
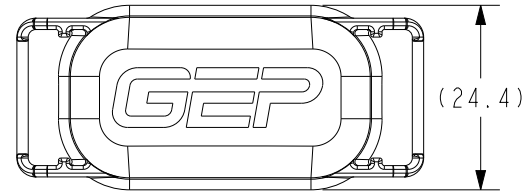
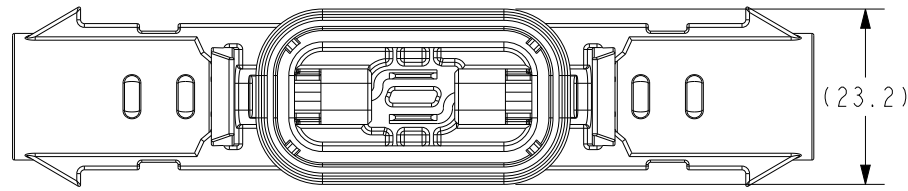
1. LIFT TPA LATCH OVER HOUSING LOCKING FEATURE AND REMOVE



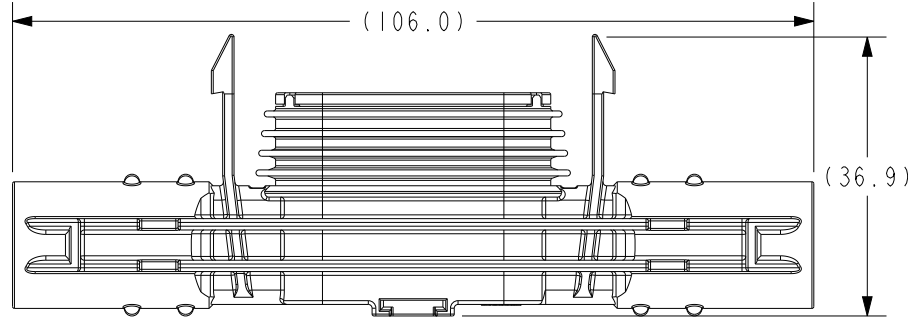
3. PULL TERMINAL/WIRE/SEAL ASSEMBLY TO REMOVE.



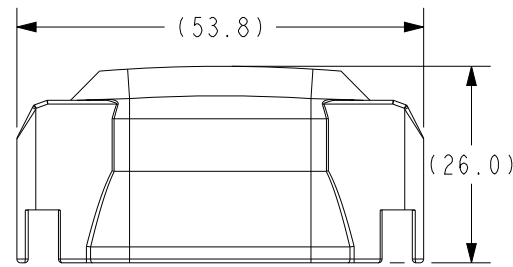
GEP POWER PRODUCTS		16830 Pheasant Drive Brookfield, WI 53005		
PART NO:	JCASE HOLDER IN-LINE SERIES (SALES)			
DESCRIPTION:	JCASE HOLDER, IN-LINE SERIES DRAWING			
CUSTOMER:	STANDARD			
METRIC (MM)	REV 0	SHEET 3 OF 4	SCALE 1:1	SIZE B



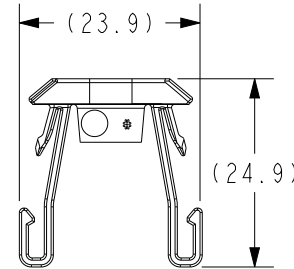
SC41-2001A-A000
TERMINAL EXTRACTION TOOL



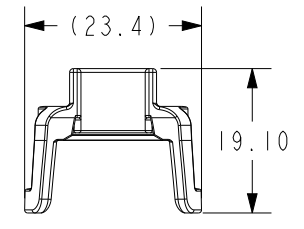
SC50-2000A-A001
HOUSING WITH COVER SEAL



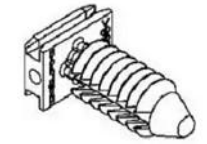
SC27-2003A-B001
COVER



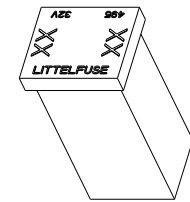
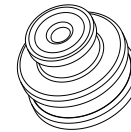
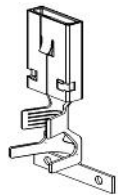
SC38-2005A-B003
CPA



SC38-2004A-B003
TPA



DELPHI/APTIV ATTACHMENT CLIP
PART NUMBER 12047835



DUCON 9.5 F CONNECTORS

DUCON 9.5 F	CABLE RANGE MM ²	GAUGE	MATERIAL	PLATING
15327010	4.0-6.0	10	CuNiSi	Sn
10730408	10	8	CuNiSi	Sn
15458196	16	6	CuNiSi	Sn
15482568	4.0-6.0	10	CuNiSi	SnAg
15408423	10	8	CuNiSi	SnAg
15458198	16	6	CuNiSi	SnAg

DUCON 9.5 MM REMOVAL TOOL: SC41-2001A-A000

CABLE SEALS

GEP PART NUMBER	GAUGE	CABLE OD MIN IN	CABLE OD MAX IN	MATERIAL	COLOR
SC14-2003A-B007	10 TXL	0.150	0.168	SILICONE	PURPLE
SC14-2003B-B010	10 GXL/GPT	0.169	0.186	SILICONE	ORANGE
SC14-2003C-B011	10 SXL	0.187	0.235	SILICONE	LT BLUE
SC14-2003C-B011	8 GXL/GPT	0.187	0.235	SILICONE	LT BLUE
SC14-2003D-B013	8 SXL	0.222	0.270	SILICONE	PINK
SC14-2003E-B014	6 SGX/SGT	0.290	0.340	SILICONE	DK BLUE

JCASE FUSES

LITTELFUSE PART NUMBER	CURRENT RATING (A)	HOUSING MATERIAL COLOR
0495020	20	BLUE
0495025	25	WHITE
0495030	30	PINK
0495040	40	GREEN
0495050	50	RED
0495060	60	YELLOW

NOTES:

1. DIMENSIONS ARE FOR REFERENCE ONLY
2. USE OF CPA'S REQUIRED TO ACHIEVE SEALING RATINGS
3. ORDER QTY 2 TPA AND QTY 2 CPA PER HOUSING
4. HOUSING, COVER, CPA, AND TPA MATERIAL: PBT BLEND UL94 V-0
5. CONNECTOR, CABLE SEAL, AND JCASE FUSE TABLES FOR REFERENCE ONLY
6. REFERENCE: DUCON 9.5 TERMINAL RATING 116 AMPS
7. ROHS AND REACH COMPLIANT

		16830 Pheasant Drive Brookfield, WI 53005		
PART NO:		JCASE HOLDER IN-LINE SERIES (SALES)		
DESCRIPTION:		JCASE HOLDER, IN-LINE SERIES DRAWING		
CUSTOMER:		STANDARD		
METRIC (MM)	REV	SHEET	SCALE	SIZE
	0	4 OF 4	1:1	B