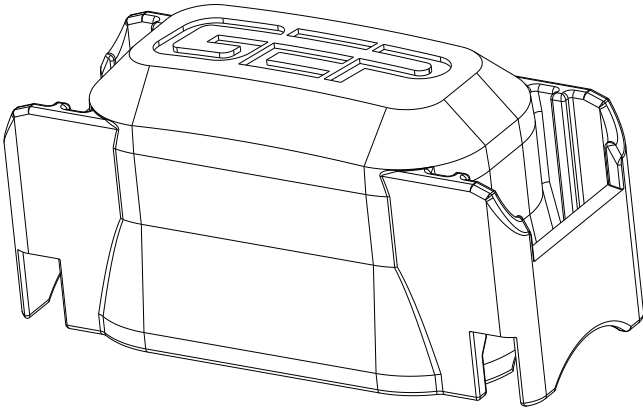


REV	REVISION DETAILS	ECO	DATE	BY	ABY
0	INITIAL RELEASE	NP-002082	02-16-2021	JWK	JML



ISO VIEW
FOR REF ONLY

CONFIDENTIAL

The information contained in this document is the property of GEP Power Products. It is not for public disclosure. Possession of the information does not convey any right to loan, sell or disclose the information. Unauthorized reproduction or use of the information is prohibited. This document is to be returned to GEP Power Products upon completion of the purpose for which it is loaned or upon request.

CRITICAL DIMENSIONS ON FEATURES TO BE CHECKED DURING ANY SET-UP ADJUSTMENTS, TOOL CHANGES, OR ANNUAL MAINTENANCE ON TOOLING.	DIMENSIONS OR FEATURES TO BE CHECKED FROM RUN-TO-RUN
TOLERANCES UNLESS OTHERWISE SPECIFIED	
THIRD ANGLE PROJECTION 	
METRIC TOL	ENGLISH TOL
1 PL DEC. = ±.25 2 PL DEC. = ±.13	2 PL DEC. = ±.01 3 PL DEC. = ±.005
ANGULAR TOL = ±2° FRACTION TOL = ±1/64 IN	
DIMENSIONS INSIDE PARENTHESES OR CONTAINING "REF" ARE FOR REFERENCE ONLY.	

COPYRIGHT - GEP POWER PRODUCTS
This is unpublished work. The disclosure of this work is limited to a select personnel. Further dissemination or disclosure to the public is PROHIBITED. This unpublished work is protected by Federal Copyright law and all rights thereunder are reserved by GEP Power Products.

		16830 Pheasant Drive Brookfield, WI 53005	
PART NO:		SC27-2003A-B001 (SALES)	
DESCRIPTION:		COVER - JCASE HOLDER, IN-LINE	
CUSTOMER:		STANDARD	
METRIC (MM)	REV	SHEET	SCALE
	0	1 OF 2	1.500
			SIZE B

1

2

3

4

5

A

A

B

B

C

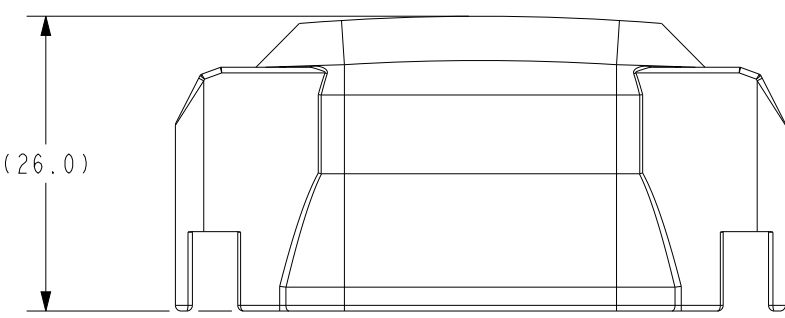
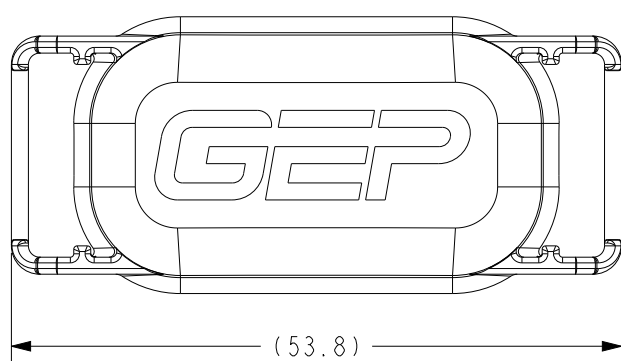
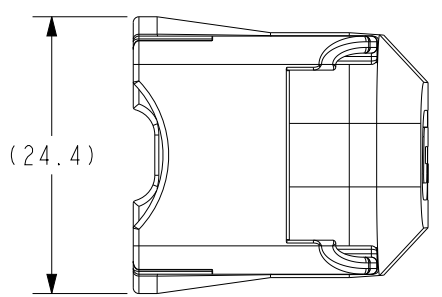
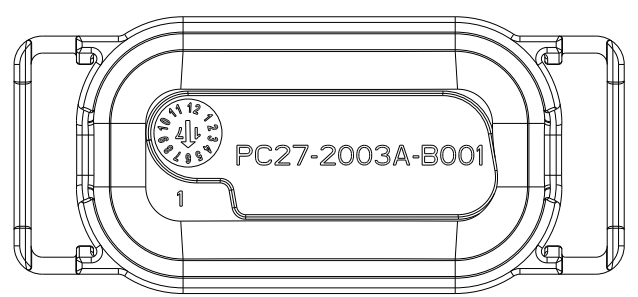
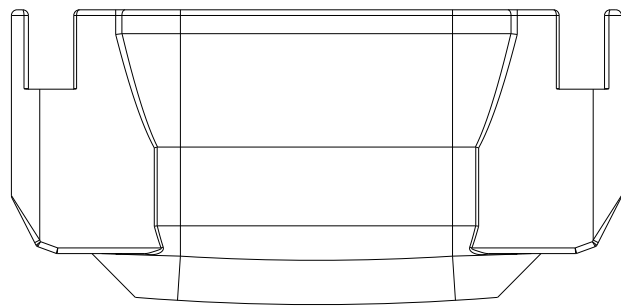
C

D

D

E

E



NOTES:
 1. MATERIAL: UNFILLED PBT
 2. COLOR: BLACK
 3. REACH AND RoHS COMPLIANT

		16830 Pheasant Drive Brookfield, WI 53005		
PART NO:		SC27-2003A-B001 (SALES)		
DESCRIPTION:		COVER - JCASE HOLDER, IN-LINE		
CUSTOMER:		STANDARD		
METRIC (MM)	REV	SHEET	SCALE	SIZE
	0	2 OF 2	1.500	B

1

2

3

4

5