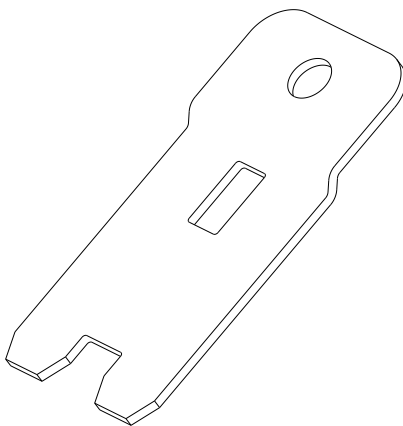


| REV | REVISION DETAILS | ECO | DATE | BY | ABY |
|-----|------------------|---------|----------|-----|-----|
| 0 | INITIAL RELEASE | NP-0612 | 10-17-17 | JWK | JML |



ISO VIEW
FOR REF ONLY

CONFIDENTIAL

The information contained in this document is the property of GEP Power Products. It is not for public disclosure. Possession of the information does not convey any right to loan, sell or disclose the information. Unauthorized reproduction or use of the information is prohibited. This document is to be returned to GEP Power Products upon completion of the purpose for which it is loaned or upon request.

TOLERANCES UNLESS
OTHERWISE SPECIFIED

THIRD ANGLE PROJECTION



METRIC TOL

ENGLISH TOL

ANGULAR TOL = $\pm 2^\circ$
FRACTION TOL = $\pm 1/64$ IN

1 PL DEC. = $\pm .25$
2 PL DEC. = $\pm .13$

2 PL DEC. = $\pm .01$
3 PL DEC. = $\pm .005$



SPECIAL REQUIREMENTS
CRITICAL DIMENSIONS ON FEATURES
TO BE CHECKED DURING ANY SET-UP
ADJUSTMENTS, TOOL CHANGES, OR
ANNUAL MAINTENANCE ON TOOLING.

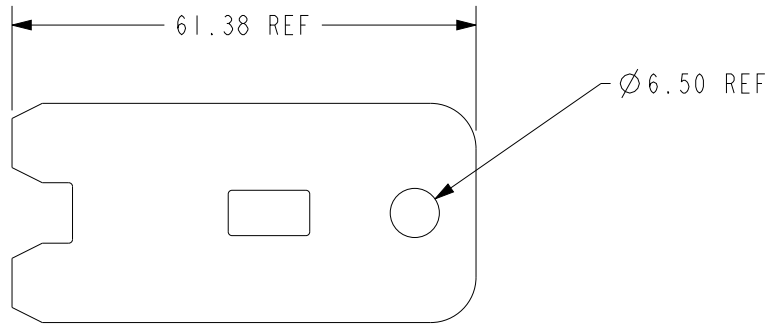
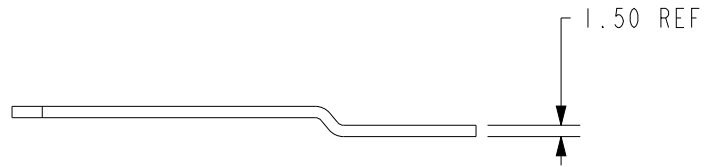
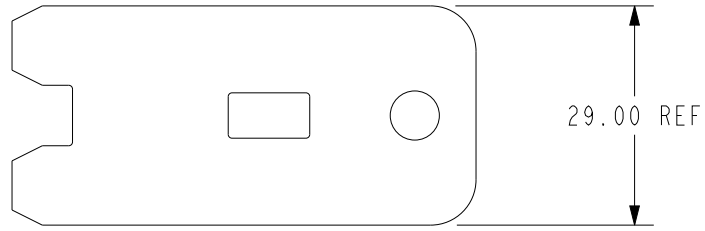


DIMENSIONS OR FEATURES TO BE
CHECKED FROM RUN TO RUN


COPYRIGHT - GEP POWER PRODUCTS

This is unpublished work. The disclosure of this work is limited to a select personnel. Further dissemination or disclosure to the public is PROHIBITED. This unpublished work is protected by Federal Copyright law and all rights thereunder are reserved by GEP Power Products.

| | | | | |
|--------------|-----|---|-------|------|
| | | 16830 Pheasant Drive Brookfield, WI 53005 | | |
| PART NO: | | FRH-A12-MB-B1 (SALES) | | |
| DESCRIPTION: | | BRACKET - PDM, FRH, FLAT WITHOUT ANTI-ROTATION, ZINC STEEL | | |
| CUSTOMER: | | STANDARD | | |
| METRIC (MM) | REV | SHEET | SCALE | SIZE |
| | 0 | 1 OF 2 | 1:1 | A |



NOTES:
1. REMOVE ALL BURRS AND SHARP EDGES

| | | | | |
|---|----------|---|--------------|-----------|
|  | | 16830 Pheasant Drive Brookfield, WI 53005 | | |
| | | PART NO: FRH-A12-MB-B1 (SALES) | | |
| DESCRIPTION: | | BRACKET - PDM, FRH, FLAT WITHOUT ANTI-ROTATION, ZINC STEEL | | |
| CUSTOMER: | | STANDARD | | |
| METRIC (MM) | REV 0 | SHEET 2 OF 2 | SCALE 1:1 | SIZE A |