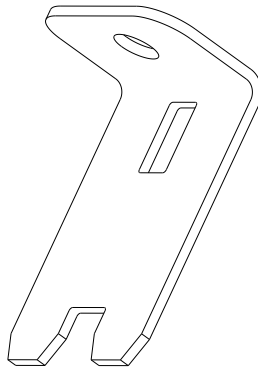


REV	REVISION DETAILS	ECO	DATE	BY	ABY
0	INITIAL RELEASE	NP-0616	10-17-2017	JWK	JML



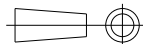
ISO VIEW  
FOR REF ONLY

**CONFIDENTIAL**

The information contained in this document is the property of GEP Power Products. It is not for public disclosure. Possession of the information does not convey any right to loan, sell or disclose the information. Unauthorized reproduction or use of the information is prohibited. This document is to be returned to GEP Power Products upon completion of the purpose for which it is loaned or upon request.

TOLERANCES UNLESS OTHERWISE SPECIFIED

THIRD ANGLE PROJECTION



METRIC TOL

ENGLISH TOL

ANGULAR TOL =  $\pm 2^\circ$   
FRACTION TOL =  $\pm 1/64$  IN

1 PL DEC. =  $\pm .25$   
2 PL DEC. =  $\pm .13$

2 PL DEC. =  $\pm .01$   
3 PL DEC. =  $\pm .005$



SPECIAL REQUIREMENTS  
CRITICAL DIMENSIONS ON FEATURES TO BE CHECKED DURING ANY SET-UP ADJUSTMENTS, TOOL CHANGES, OR ANNUAL MAINTENANCE ON TOOLING.

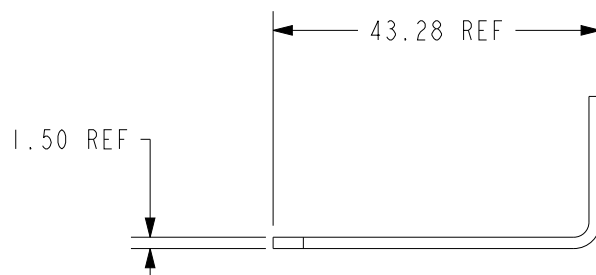
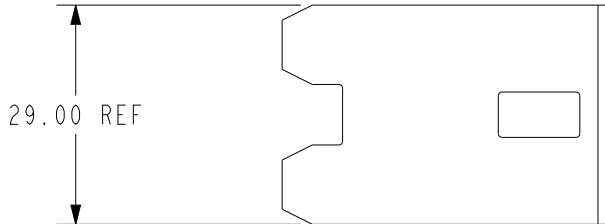


DIMENSIONS OR FEATURES TO BE CHECKED FROM RUN TO RUN

**COPYRIGHT - GEP POWER PRODUCTS**

This is unpublished work. The disclosure of this work is limited to a select personnel. Further dissemination or disclosure to the public is PROHIBITED. This unpublished work is protected by Federal Copyright law and all rights thereunder are reserved by GEP Power Products.

		16830 Pheasant Drive Brookfield, WI 53005		
PART NO:		FRH-A12-MB-C1 (SALES)		
DESCRIPTION:		BRACKET - PDM, FRH, 90° BENT, ZINC STEEL		
CUSTOMER:		STANDARD		
METRIC (MM)	REV	SHEET	SCALE	SIZE
	0	1 OF 2	1:1	A



NOTES:  
1. REMOVE ALL BURRS AND SHARP EDGES

		16830 Pheasant Drive Brookfield, WI 53005		
PART NO:		FRH-A12-MB-C1 (SALES)		
DESCRIPTION:		BRACKET - PDM, FRH, 90° BENT, ZINC STEEL		
CUSTOMER:		STANDARD		
METRIC (MM)	REV	SHEET	SCALE	SIZE
	0	2 OF 2	1:1	A