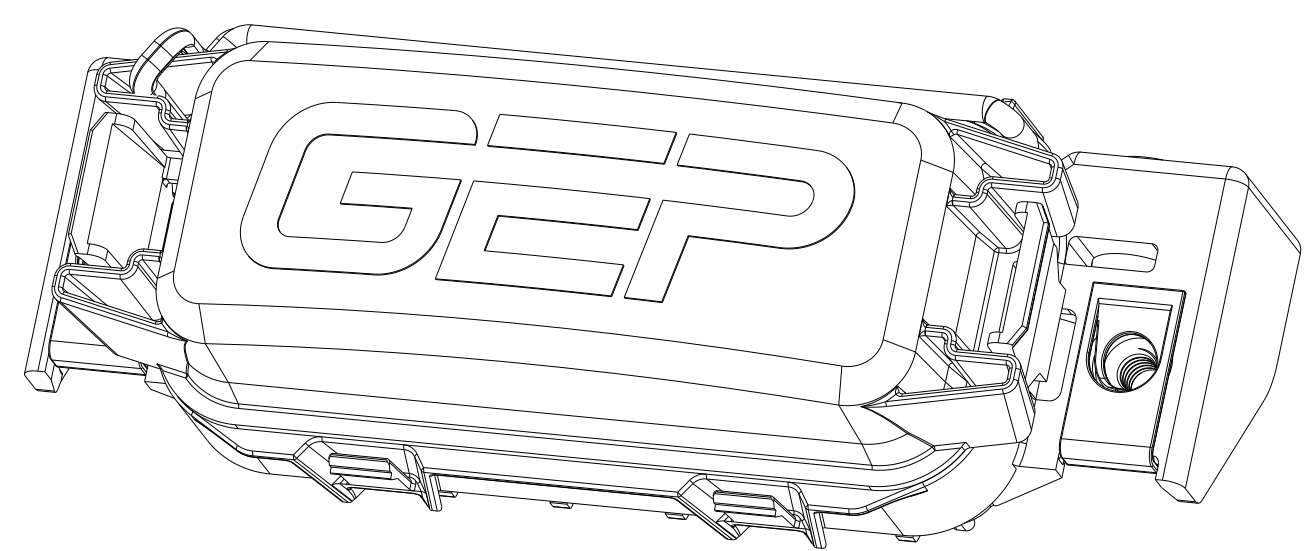


| REV | REVISION DETAILS | ECO | DATE | BY | ABY |
|-----|---|-----------|------------|-----|-----|
| 0 | RELEASE FOR PRODUCTION | N/A | 9-17-2017 | RR | KS |
| 1 | UPDATED TO NEW FORMAT. MOVED COMPONENT INSERT OPTIONS TO SHEET 3. CHANGED MOUNTING OPTION I TO OBSOLETE. CHANGED COVER/TETHER OPTIONS B & D TO OBSOLETE. UPDATED DESCRIPTION OF COVER/TETHER OPTION E. MADE SEVERAL NOTE UPDATES AND COMBINED/MOVED ALL DRAWING NOTES TO SHEET 2. ADDED VIEWS & HEIGHT DIMENSIONS TO COMPONENT INSERT OPTIONS. ADDED ISO VIEWS TO SHEET 4. DETAILING MOUNTING OPTIONS. MOVED GANGED VIEWS TO SHEET 4. ADDED PANEL CUTOUT VIEWS & DIMENSIONS TO SHEET 4. MOVED COMPONENT OPTIONS TO SHEET 5. ADDED PLAIN COVER, COVER WITH GORE VENT, GORE VENT SERVICE PART. UPDATED DESCRIPTIONS ON TPA'S, MOUNTING CLIP, SEAL. UPDATED TETHER PART NUMBER. MOVED TABLES TO SHEET 6. ADDED REMOVAL TOOL PART NUMBERS TO TABLES. UPDATED ALL DIMENSIONS TO REFERENCE. | NP-003762 | 9-30-2021 | JWK | JJW |
| 2 | UPDATED LAYOUT OF DRAWING | NP-005655 | 10-17-2023 | JWK | JML |
| 3 | PART NUMBER WAS PDM-R FAMILY. UPDATED DESCRIPTION. UPDATED TO LATEST DRAWING STANDARDS. | NP-005912 | 02-13-2024 | JWK | JML |



ISO VIEW
FOR REF ONLY

CONFIDENTIAL

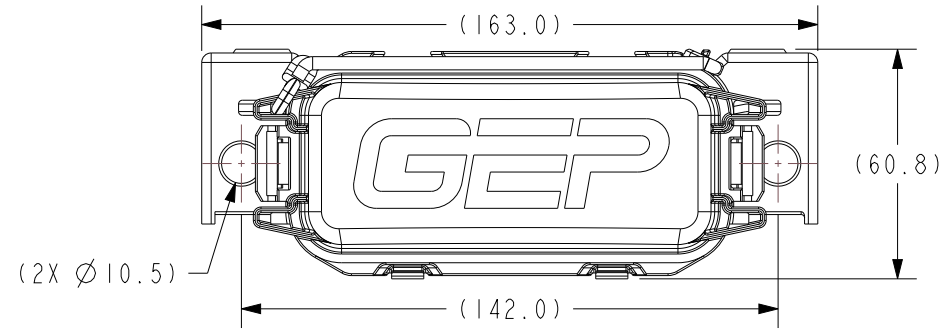
The information contained in this document is the property of GEP Power Products. It is not for public disclosure. Possession of the information does not convey any right to loan, sell or disclose the information. Unauthorized reproduction or use of the information is prohibited. This document is to be returned to GEP Power Products upon completion of the purpose for which it is loaned or upon request.

| | |
|--|--|
| CRITICAL DIMENSIONS ON FEATURES TO BE CHECKED DURING ANY SET-UP ADJUSTMENTS, TOOL CHANGES, OR ANNUAL MAINTENANCE ON TOOLING. | DIMENSIONS OR FEATURES TO BE CHECKED FROM RUN-TO-RUN |
| TOLERANCES UNLESS OTHERWISE SPECIFIED | |
| THIRD ANGLE PROJECTION | |
| METRIC TOL | ENGLISH TOL |
| 1 PL DEC. = ±.25 2 PL DEC. = ±.13 | 2 PL DEC. = ±.01 3 PL DEC. = ±.005 |
| ANGULAR TOL = ±2° FRACTION TOL = ±1/64 IN | |
| DIMENSIONS INSIDE PARENTHESES OR CONTAINING "REF" ARE FOR REFERENCE ONLY. | |

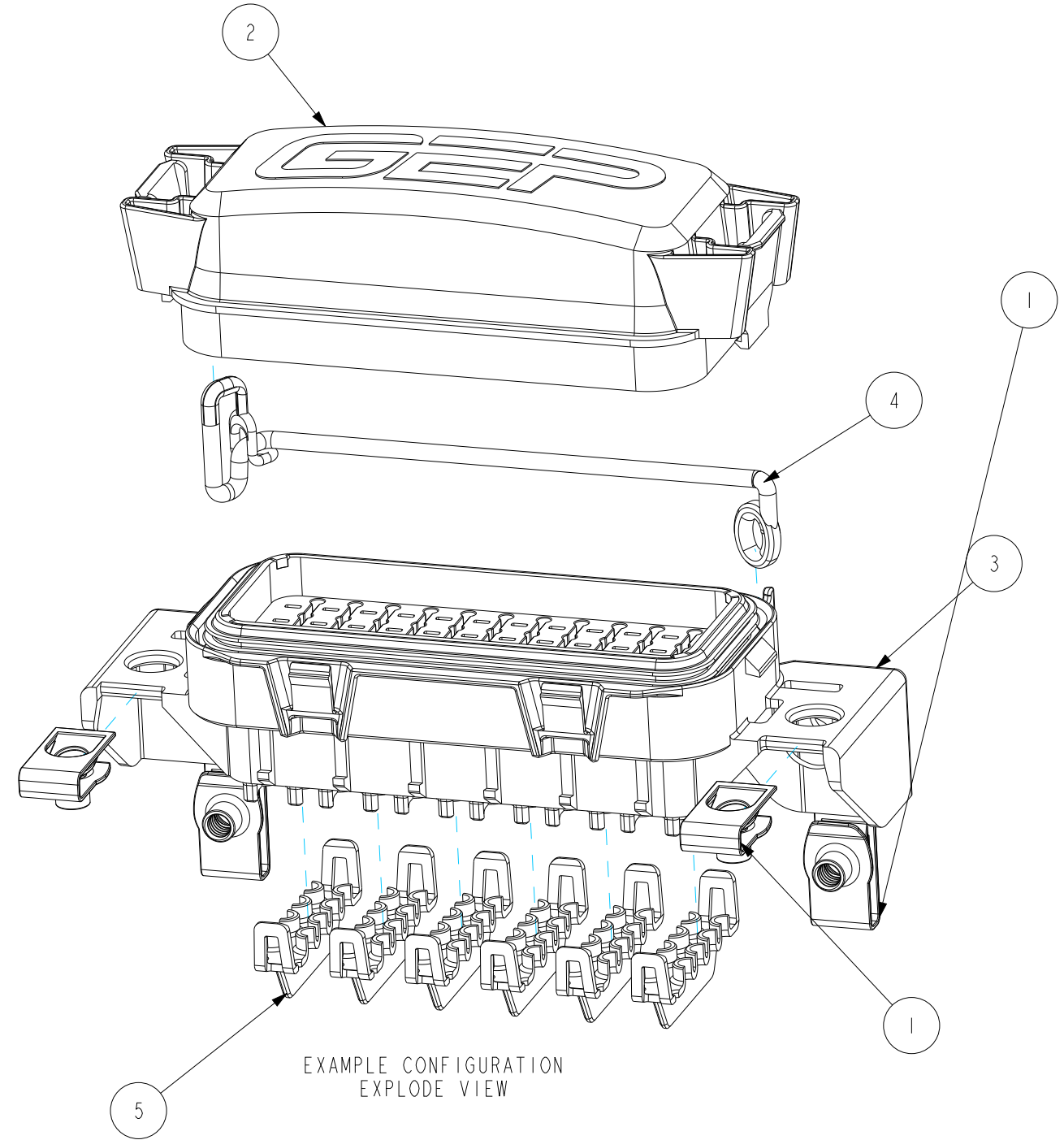
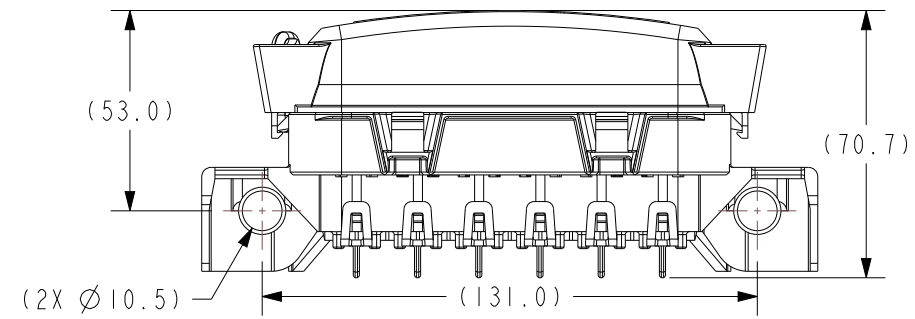
COPYRIGHT - GEP POWER PRODUCTS
This is unpublished work. The disclosure of this work is limited to a select personnel. Further dissemination or disclosure to the public is PROHIBITED. This unpublished work is protected by Federal Copyright law and all rights thereunder are reserved by GEP Power Products.

| | | | | |
|--------------|-----|--|-------|------|
| | | 16830 Pheasant Drive Brookfield, WI 53005 | | |
| PART NO: | | PDM-R SERIES (SALES) | | |
| DESCRIPTION: | | POWER DISTRIBUTION MODULE - MODEL R, SERIES DRAWING | | |
| CUSTOMER: | | STANDARD | | |
| METRIC (MM) | REV | SHEET | SCALE | SIZE |
| | 3 | 1 OF 13 | 1:1 | B |

EXAMPLE CONFIGURATION & NOTES



EXAMPLE CONFIGURATION WITH DIMENSIONAL INFO - SCALE 1:2



EXAMPLE CONFIGURATION EXPLODE VIEW

NOTES:

1. HOUSING & COVER MATERIAL: PBT POLYESTER
2. HOUSING & COVER FINISH/COLOR: MATTE/BLACK
3. SEAL COLOR: BLUE
4. CORRECT TERMINAL SEALS AND/OR CAVITY PLUGS MUST BE USED TO ENSURE A SEALED UNIT
5. RECOMMENDED MAXIMUM MOUNTING TORQUE: 40 IN-LBS
6. DIMENSIONS ARE FOR REFERENCE ONLY
7. IF ADDITIONAL MODULES ARE ADDED, 117.3 DIMENSION WILL INCREASE BY 56.5 MM FOR EACH MODULE.
8. RoHS AND REACH COMPLIANT

| EXAMPLE CONFIGURATION BOM | | | |
|---------------------------|---|-----------|-----|
| ITEM | DESCRIPTION | PART NO. | QTY |
| 1 | CLIP - M6 - 1 U-SPRING NUT | PDM-TMC | 4 |
| 2 | COVER - PDM-R - PDM-T - GEP | PDM-TC | 1 |
| 3 | PDM - PDM-R - 280 TERM - HOUSING AND SEAL | PDM-R4A01 | 1 |
| 4 | TETHER - COVER | PDM-SCT | 1 |
| 5 | TPA - PDM-R, 280 TERM | PDM-TTI | 6 |

GEP POWER PRODUCTS 16830 Pheasant Drive Brookfield, WI 53005

PART NO: PDM-R SERIES (SALES)

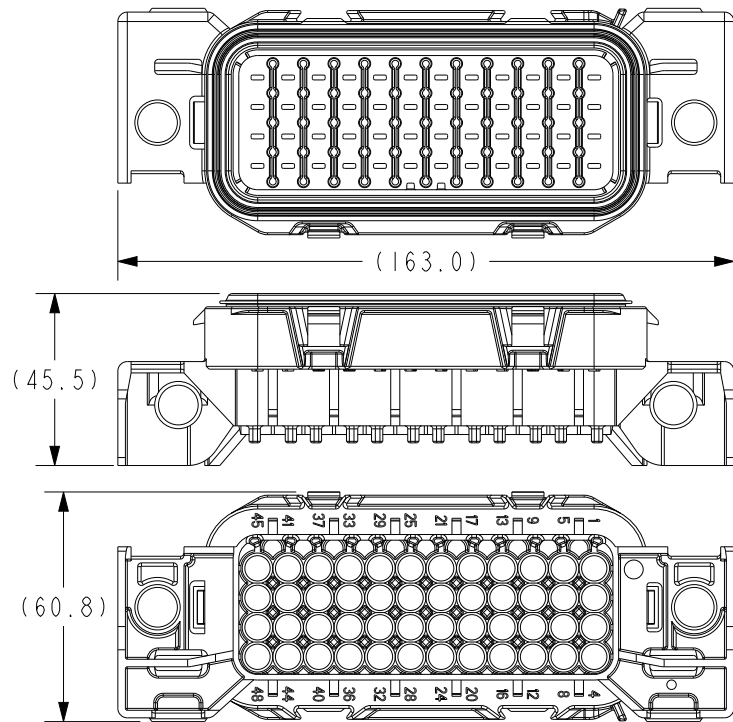
DESCRIPTION: POWER DISTRIBUTION MODULE - MODEL R, SERIES DRAWING

CUSTOMER: STANDARD

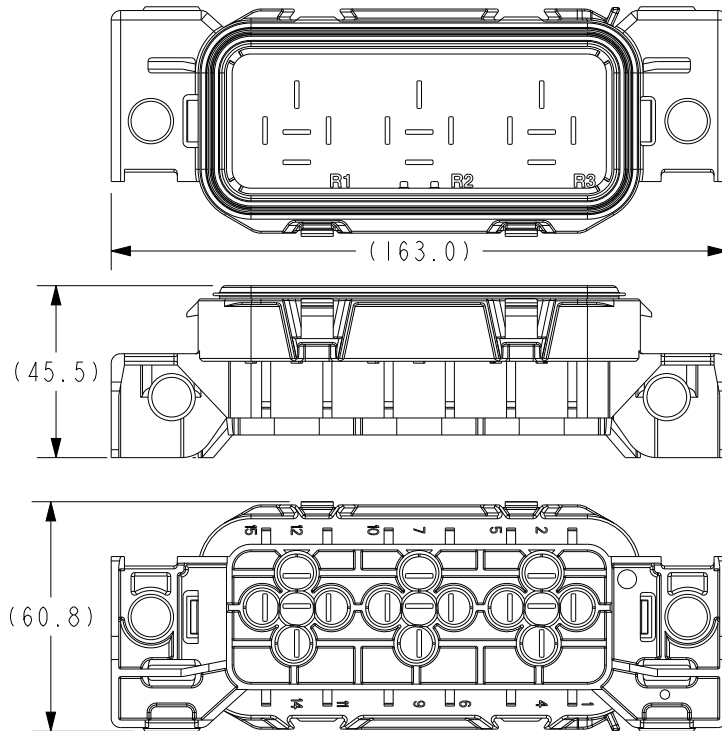
| | | | | |
|-------------|-------|---------------|-----------|--------|
| METRIC (MM) | REV 3 | SHEET 2 OF 13 | SCALE 1:2 | SIZE B |
|-------------|-------|---------------|-----------|--------|

HOUSING W/SEAL OPTIONS

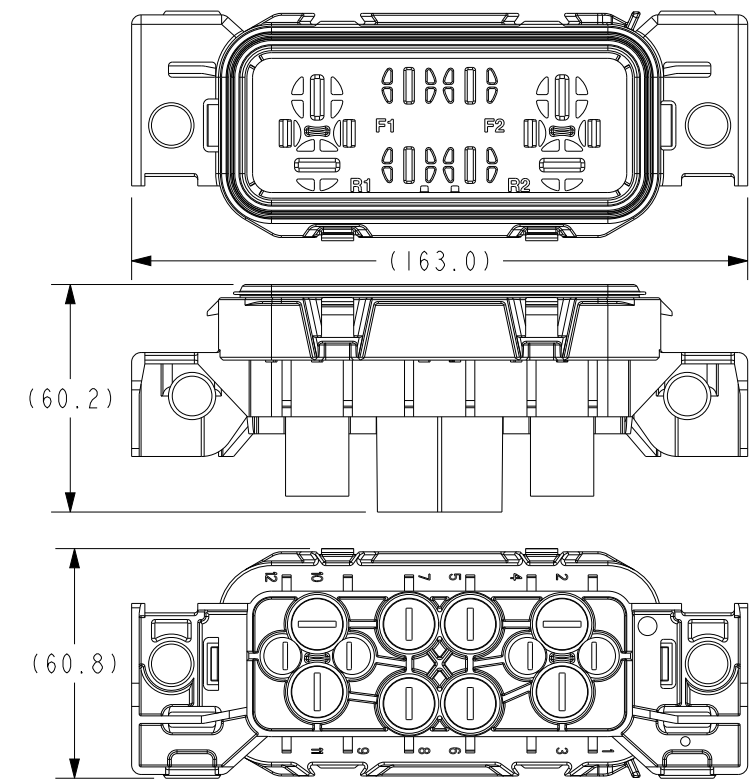
PDM-R4A01
PDM - PDM-R - 280 TERM - HOUSING AND SEAL



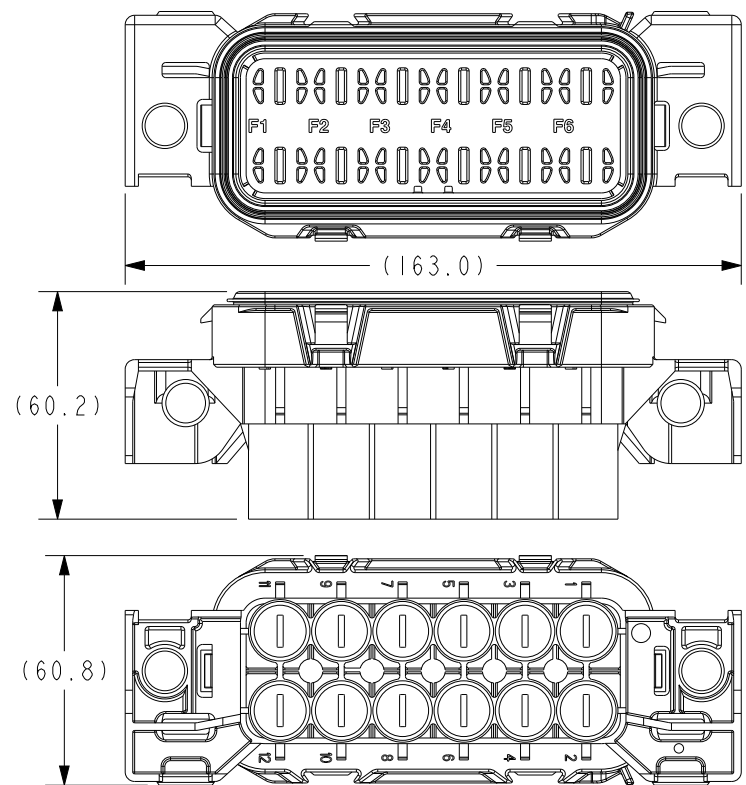
PDM-R4B01
PDM - PDM-R - MINI ISO RELAY - HOUSING AND SEAL



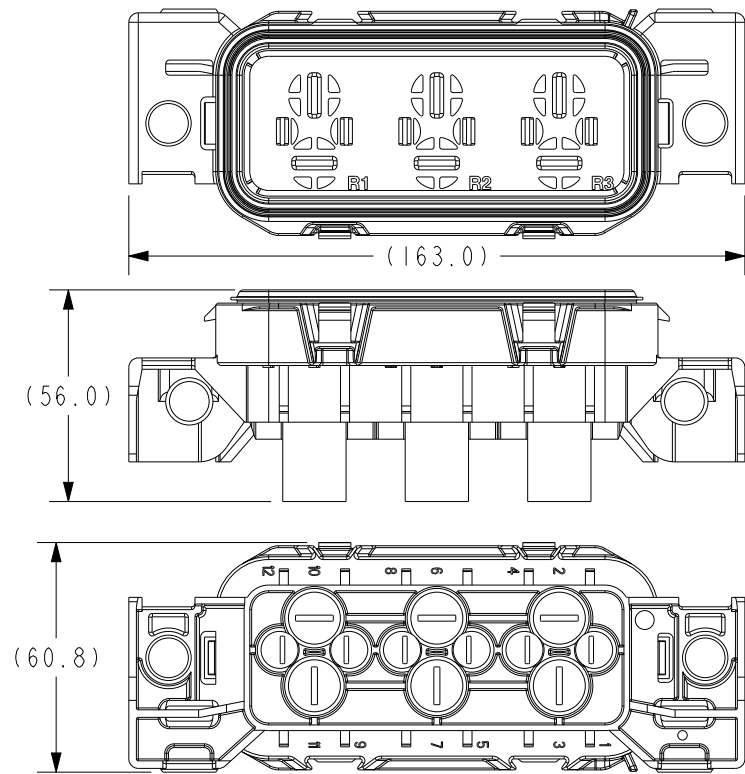
PDM-R4C01
PDM - PDM-R - MAXI ISO RELAY AND MAXI FUSE - HOUSING AND SEAL



PDM-R4D01
PDM - PDM-R - MAXI FUSE - HOUSING AND SEAL



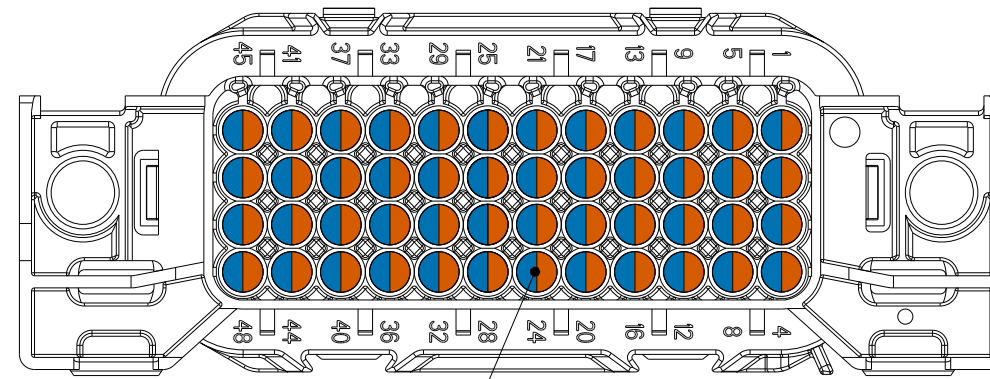
PDM-R4E01
PDM - PDM-R - MAXI ISO RELAY - HOUSING AND SEAL



| | | | | |
|---------------------------|--|--|--------------|-----------|
| GEP POWER PRODUCTS | | 16830 Pheasant Drive Brookfield, WI 53005 | | |
| PART NO: | PDM-R SERIES (SALES) | | | |
| DESCRIPTION: | POWER DISTRIBUTION MODULE - MODEL R, SERIES DRAWING | | | |
| CUSTOMER: | STANDARD | | | |
| METRIC (MM) | REV 3 | SHEET 3 OF 13 | SCALE 1:2 | SIZE B |

TERMINAL AND CABLE SEAL INFORMATION

PDM-R4A01



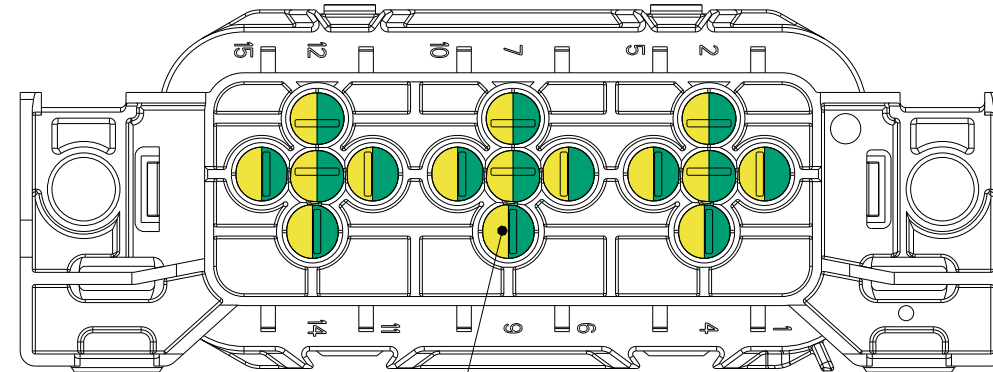
280 CAVITIES
SEE TABLE A FOR TERMINALS
AND CABLE SEALS

Table A

| DELPHI 280 METRI-PACK TERMINALS | | | | |
|---|--------------------------------|------------------|---------------|----------|
| PART # | CABLE RANGE (mm ²) | MATERIAL | PLATING | |
| 12077413 | 3 | TIN BRASS | TIN | |
| 12129493 | 2.0-3.0 | TIN BRASS | TIN | |
| 12077411 | 0.8-1.0 | TIN BRASS | TIN | |
| 12084201 | 0.35-0.50 | TIN BRASS | TIN | |
| 12176387 | 5 | BERYLLIUM COPPER | SILVER/NICKEL | |
| 12176388 | 2.0-3.0 | BERYLLIUM COPPER | SILVER/NICKEL | |
| 12176389 | 0.8-1.0 | BERYLLIUM COPPER | SILVER/NICKEL | |
| DELPHI 280 METRI-PACK CABLE SEALS (FOR REF. ONLY) | | | | |
| PART # REEL | PART # LOOSE | CABLE DIA. | MATERIAL | COLOR |
| 12015360 | 12015193 | 3.45-4.3 | SILICONE | BLUE |
| 12015359 | 12010293 | 2.81-3.49 | SILICONE | LT. GRAY |
| 12015284 | 12015323 | 2.03-2.85 | SILICONE | GREEN |
| 12041352 | 12041351 | 2.03-2.42 | SILICONE | TAN |
| 12089444 | 12089679 | 1.6-2.15 | SILICONE | PURPLE |
| 12034365 | 12015899 | 1.29-1.70 | SILICONE | DK. RED |
| | 12010300 | PLUG | SILICONE | GREEN |
| DELPHI 280 METRI-PACK TERMINAL REMOVAL TOOL (FOR REF. ONLY) | | | | |
| PART # 12094430 | | | | |

| | | | | |
|---|-----|--|-------|------|
| GEP <small>POWER PRODUCTS</small> | | <small>16830 Pheasant Drive Brookfield, WI 53005</small> | | |
| PART NO: | | PDM-R SERIES (SALES) | | |
| DESCRIPTION: | | POWER DISTRIBUTION MODULE - MODEL R, SERIES DRAWING | | |
| CUSTOMER: | | STANDARD | | |
| METRIC (MM) | REV | SHEET | SCALE | SIZE |
| | 3 | 4 OF 13 | 1:1 | B |

TERMINAL AND CABLE SEAL INFORMATION PDM-R4B01



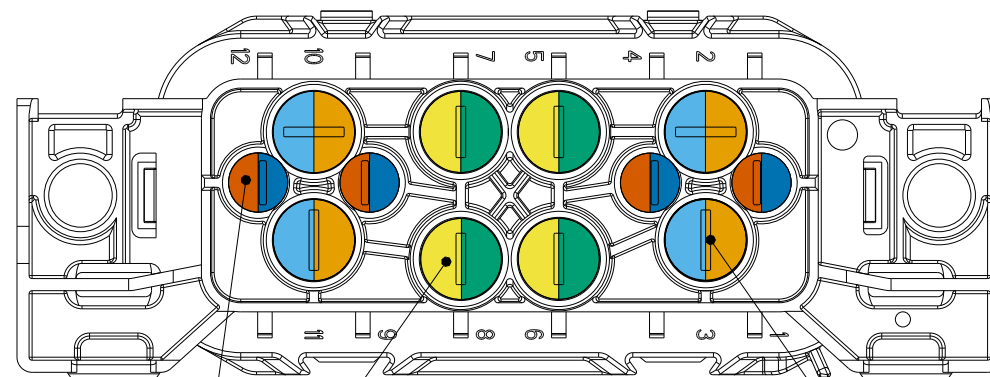
630 CAVITIES
SEE TABLE B FOR TERMINALS
AND CABLE SEALS

Table B

| DELPHI 630 METRI-PACK TERMINALS | | | | |
|--|--------------------------|------------------|---------------|-----------|
| PART # | RANGE (mm ²) | MATERIAL | PLATING | |
| 15317331 | 4.00-6.00 | TIN BRASS | TIN | |
| 12052456 | 3.00-5.00 | TIN BRASS | TIN | |
| 12052455 | 1.00-2.00 | TIN BRASS | TIN | |
| 12052457 | 0.50-0.80 | TIN BRASS | TIN | |
| 15317332 | 4.00-6.00 | BERYLLIUM COPPER | SILVER/NICKEL | |
| 15305232 | 3.00-5.00 | BERYLLIUM COPPER | SILVER/NICKEL | |
| DELPHI 480 METRI-PACK CABLE SEALS (REF. ONLY) | | | | |
| NOTE: 630 CAVITIES IN THIS HOUSING ARE DESIGNED TO BE USED WITH 480 SERIES CABLE SEALS | | | | |
| PART # REEL | PART # LOOSE | CABLE DIA. | MATERIAL | COLOR |
| 15344644 | 15363779 | 1.20-2.00 | SILICONE | YELLOW |
| 12052931 | 12052930 | 1.60-2.15 | SILICONE | YELLOW |
| | 15327998 | 2.00-2.70 | SILICONE | BLUE |
| 12048433 | 12048441 | 2.00-2.90 | SILICONE | WHITE |
| 15344645 | 15363604 | 2.00-2.90 | SILICONE | WHITE |
| 12052452 | 12048442 | 2.80-3.90 | SILICONE | DK. RED |
| 15337204 | 15327864 | 2.80-3.80 | SILICONE | DK. RED |
| 15344646 | 15363605 | 3.60-4.50 | SILICONE | GREEN |
| 10733034 | 10733145 | 4.40-5.10 | SILICONE | GRAY |
| 15344104 | 15344647 | 4.40-5.10 | SILICONE | GRAY |
| | 12066082 | PLUG | SILICONE | LT. GREEN |
| DELPHI METRI-PACK TERMINAL REMOVAL TOOL (FOR REF. ONLY) | | | | |
| PART # 12094430 | | | | |

| | | | | |
|---|-----|--|-------|------|
| GEP <small>POWER PRODUCTS</small> | | <small>16830 Pheasant Drive Brookfield, WI 53005</small> | | |
| PART NO: | | PDM-R SERIES (SALES) | | |
| DESCRIPTION: | | POWER DISTRIBUTION MODULE - MODEL R, SERIES DRAWING | | |
| CUSTOMER: | | STANDARD | | |
| METRIC (MM) | REV | SHEET | SCALE | SIZE |
| | 3 | 5 OF 13 | 1:1 | B |

TERMINAL AND CABLE SEAL INFORMATION PDM-R4C01



630 CAVITIES
SEE TABLE C FOR TERMINALS
AND CABLE SEALS

LEAR MAK8 CAVITIES
SEE TABLE D FOR TERMINALS
AND CABLE SEALS

DUCON 9.5 CAVITIES
SEE TABLE E FOR TERMINALS
AND CABLE SEALS

Table C


| DELPHI 630 METRI-PACK TERMINALS (FOR REF. ONLY) | | | | |
|---|--------------------------|------------------|---------------|-----------|
| PART # | RANGE (mm ²) | MATERIAL | PLATING | |
| 15317331 | 4.00-6.00 | TIN BRASS | TIN | |
| 12052456 | 3.00-5.00 | TIN BRASS | TIN | |
| 12052455 | 1.00-2.00 | TIN BRASS | TIN | |
| 12052457 | 0.50-0.80 | TIN BRASS | TIN | |
| 15317332 | 4.00-6.00 | BERYLLIUM COPPER | SILVER/NICKEL | |
| 15305232 | 3.00-5.00 | BERYLLIUM COPPER | SILVER/NICKEL | |
| DELPHI 630 METRI-PACK CABLE SEALS (FOR REF. ONLY) | | | | |
| PART # REEL | PART # LOOSE | CABLE DIA. | MATERIAL | COLOR |
| 10730240 | 15324997 | 1.65-2.15 | SILICONE | TAN |
| 15344951 | 15324995 | 2.01-2.85 | SILICONE | DK. RED |
| 10730241 | 15324994 | 2.81-3.75 | SILICONE | GRAY |
| 15344032 | 15324996 | 3.61-4.50 | SILICONE | BLUE |
| | 15324993 | 4.40-5.10 | SILICONE | GREEN |
| 12077760 | 12077759 | 1.65-2.15 | SILICONE | TAN |
| 12059259 | 12052388 | 2.01-2.85 | SILICONE | DK. RED |
| 12059258 | 12052387 | 2.81-3.75 | SILICONE | GRAY |
| 12059260 | 12052668 | 3.61-4.50 | SILICONE | BLUE |
| 12059257 | 12052386 | 4.40-5.10 | SILICONE | GREEN |
| | 12059255 | PLUG | SILICONE | LT. GREEN |
| DELPHI 630 METRI-PACK TERMINAL REMOVAL TOOL (FOR REF. ONLY) | | | | |
| PART # 12094430 | | | | |

Table D

| LEAR MAK8 PLUS TERMINALS (FOR REF. ONLY) | | | |
|--|--------------------------|------------|----------------|
| PART NUMBER | RANGE (mm ²) | PLATING | VARIATION |
| 28224 306 179 | 2.5-4.0 | TIN | 1 - LONG SEAL |
| 28224 306 710 | 2.5-4.0 | SILVER | 1 - LONG SEAL |
| 28469 306 189 | 2.5-4.0 | SILVER/TIN | 3 - SHORT SEAL |
| 28225 306 179 | 6.0-10.0 | TIN | 1 - LONG SEAL |
| 28225 306 710 | 6.0-10.0 | SILVER | 1 - LONG SEAL |
| 28459 306 189 | 6.0-10.0 | SILVER/TIN | 3 - SHORT SEAL |
| 28243 306 179 | 10.0-16.0 | TIN | 1 - LONG SEAL |
| 28243 306 710 | 10.0-16.0 | SILVER | 1 - LONG SEAL |
| GEP CABLE SEALS (VARIATION 1 - LONG) | | | |
| PART NUMBER | CABLE DIA. | MATERIAL | COLOR |
| PDM-TWS-L1 | 2.7-3.0 | SILICONE | GREEN |
| PDM-TWS-L2 | 3.4-3.8 | SILICONE | PURPLE |
| PDM-TWS-L3 | 4.0-4.5 | SILICONE | ORANGE |
| PDM-TWS-L4 | 4.6-5.3 | SILICONE | LIGHT BLUE |
| PDM-TWS-L5 | 5.8-6.6 | SILICONE | GRAY |
| PDM-TWS-L6 | 6.5-7.8 | SILICONE | RED |
| GEP CABLE SEALS (VARIATION 3 - SHORT) | | | |
| PDM-TWS-S1 | 2.7-3.0 | SILICONE | GREEN |
| PDM-TWS-S2 | 3.4-3.8 | SILICONE | PURPLE |
| PDM-TWS-S3 | 4.0-4.5 | SILICONE | ORANGE |
| PDM-TWS-S4 | 4.6-5.3 | SILICONE | LIGHT BLUE |
| PDM-TWS-S5 | 5.8-6.6 | SILICONE | GRAY |
| GEP CABLE SEAL PLUG | | | |
| PDM-TWS-P | N.A. | SILICONE | YELLOW |
| LEAR MAK8 PLUS TERMINAL REMOVAL TOOL (FOR REF. ONLY) | | | |
| PART # 50000017609 BY Karl Püplichhuisen GmbH & Co. | | | |

Table E

| DELPHI 9.5 DUCON TERMINALS | | | |
|--|--------------------------------|--------------|------------|
| PART # | CABLE RANGE (mm ²) | MATERIAL | PLATING |
| 15327010 | 4.0-6.0 | COPPER ALLOY | TIN |
| 15482568 | 4.0-6.0 | COPPER ALLOY | SILVER/TIN |
| 10730408 | 10 | COPPER ALLOY | TIN |
| 15408423 | 10 | COPPER ALLOY | SILVER/TIN |
| 15458196 | 16 | COPPER ALLOY | TIN |
| 15458198 | 16 | COPPER ALLOY | SILVER/TIN |
| DELPHI 9.5 DUCON CABLE SEALS (FOR REF. ONLY) | | | |
| PART # | CABLE DIA. | MATERIAL | COLOR |
| 15492996 | 2.20-3.00 | SILICONE | BLUE |
| 15327126 | 3.4-4.3 | SILICONE | DK. RED |
| 10720983 | 6.00-6.40 | SILICONE | GREEN |
| 15470809 | 6.50-7.75 | SILICONE | RED |
| 10720907 | PLUG | SILICONE | GREEN |
| GEP CABLE SEALS - 9.5 DUCON (FOR REF. ONLY) | | | |
| PART # | CABLE DIA. | MATERIAL | COLOR |
| PDM-TWS-D4 | 4.6-5.3 | SILICONE | LIGHT BLUE |
| DELPHI 9.5 DUCON TERMINAL REMOVAL TOOL (FOR REF. ONLY) | | | |
| PART # 10714800 | | | |



16830 Pheasant Drive
Brookfield, WI 53005

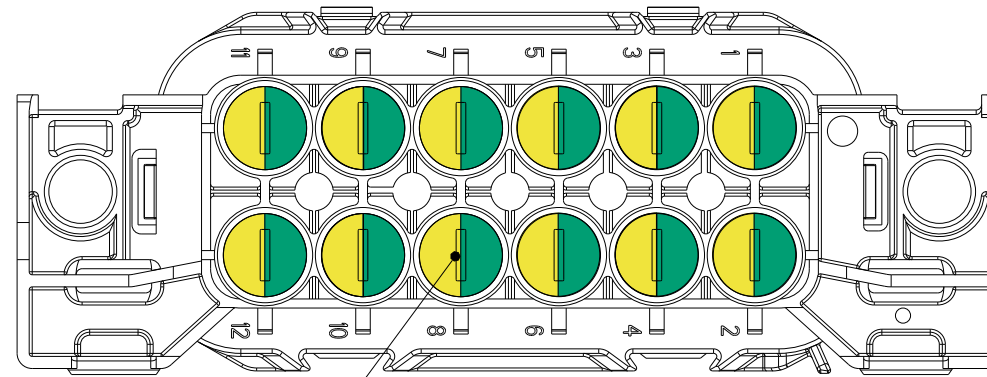
PART NO: PDM-R SERIES (SALES)

DESCRIPTION: POWER DISTRIBUTION MODULE - MODEL R, SERIES DRAWING

CUSTOMER: STANDARD

| | | | | |
|-------------|-----|---------|-------|------|
| METRIC (MM) | REV | SHEET | SCALE | SIZE |
| | 3 | 6 OF 13 | 1:1 | B |

TERMINAL AND CABLE SEAL INFORMATION PDM-R4D01



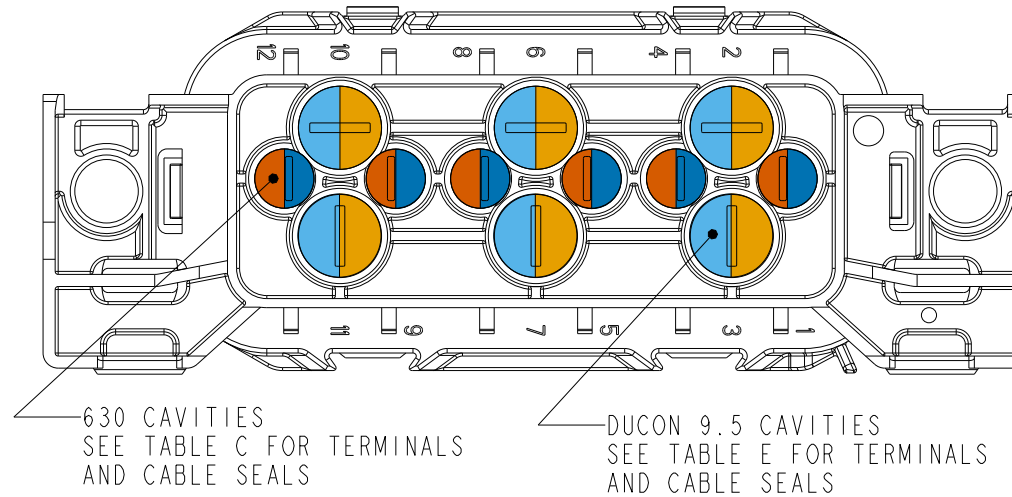
LEAR MAK8 CAVITIES
SEE TABLE D FOR TERMINALS
AND CABLE SEALS

Table D

| LEAR MAK8 PLUS TERMINALS (FOR REF. ONLY) | | | |
|--|--------------------------|------------|----------------|
| PART NUMBER | RANGE (mm ²) | PLATING | VARIATION |
| 28224 306 179 | 2.5-4.0 | TIN | 1 - LONG SEAL |
| 28224 306 710 | 2.5-4.0 | SILVER | 1 - LONG SEAL |
| 28469 306 189 | 2.5-4.0 | SILVER/TIN | 3 - SHORT SEAL |
| 28225 306 179 | 6.0-10.0 | TIN | 1 - LONG SEAL |
| 28225 306 710 | 6.0-10.0 | SILVER | 1 - LONG SEAL |
| 28459 306 189 | 6.0-10.0 | SILVER/TIN | 3 - SHORT SEAL |
| 28243 306 179 | 10.0-16.0 | TIN | 1 - LONG SEAL |
| 28243 306 710 | 10.0-16.0 | SILVER | 1 - LONG SEAL |
| GEP CABLE SEALS (VARIATION 1 - LONG) | | | |
| PART NUMBER | CABLE DIA. | MATERIAL | COLOR |
| PDM-TWS-L1 | 2.7-3.0 | SILICONE | GREEN |
| PDM-TWS-L2 | 3.4-3.8 | SILICONE | PURPLE |
| PDM-TWS-L3 | 4.0-4.5 | SILICONE | ORANGE |
| PDM-TWS-L4 | 4.6-5.3 | SILICONE | LIGHT BLUE |
| PDM-TWS-L5 | 5.8-6.6 | SILICONE | GRAY |
| PDM-TWS-L6 | 6.5-7.8 | SILICONE | RED |
| GEP CABLE SEALS (VARIATION 3 - SHORT) | | | |
| PDM-TWS-S1 | 2.7-3.0 | SILICONE | GREEN |
| PDM-TWS-S2 | 3.4-3.8 | SILICONE | PURPLE |
| PDM-TWS-S3 | 4.0-4.5 | SILICONE | ORANGE |
| PDM-TWS-S4 | 4.6-5.3 | SILICONE | LIGHT BLUE |
| PDM-TWS-S5 | 5.8-6.6 | SILICONE | GRAY |
| GEP CABLE SEAL PLUG | | | |
| PDM-TWS-P | N.A. | SILICONE | YELLOW |
| LEAR MAK8 PLUS TERMINAL REMOVAL TOOL (FOR REF. ONLY) | | | |
| PART # 50000017609 BY Karl Püplichhaisen GmbH & Co. | | | |

| | | | | |
|--------------|-----|--|-------|------|
| | | 16830 Pheasant Drive Brookfield, WI 53005 | | |
| PART NO: | | PDM-R SERIES (SALES) | | |
| DESCRIPTION: | | POWER DISTRIBUTION MODULE - MODEL R, SERIES DRAWING | | |
| CUSTOMER: | | STANDARD | | |
| METRIC (MM) | REV | SHEET | SCALE | SIZE |
| | 3 | 7 OF 13 | 1:1 | B |

TERMINAL AND CABLE SEAL INFORMATION PDM-R4E01



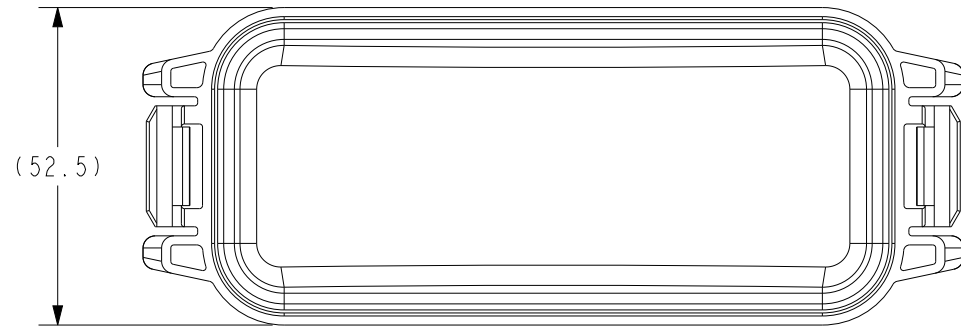
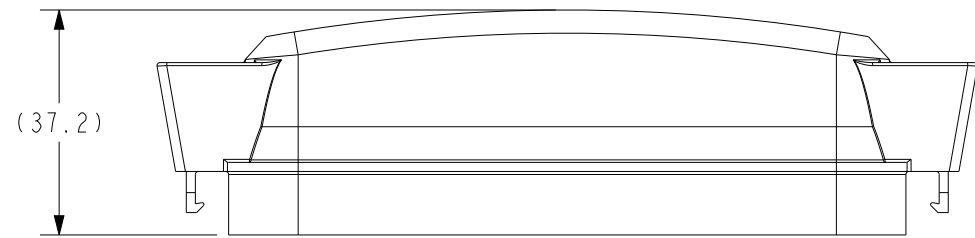
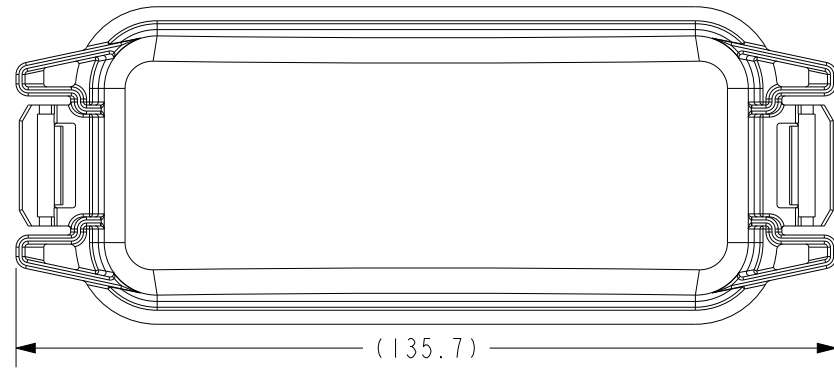
| Table C | | | | |
|---|--------------------------|------------------|---------------|-----------|
| DELPHI 630 METRI-PACK TERMINALS (FOR REF. ONLY) | | | | |
| PART # | RANGE (mm ²) | MATERIAL | PLATING | |
| 15317331 | 4.00-6.00 | TIN BRASS | TIN | |
| 12052456 | 3.00-5.00 | TIN BRASS | TIN | |
| 12052455 | 1.00-2.00 | TIN BRASS | TIN | |
| 12052457 | 0.50-0.80 | TIN BRASS | TIN | |
| 15317332 | 4.00-6.00 | BERYLLIUM COPPER | SILVER/NICKEL | |
| 15305232 | 3.00-5.00 | BERYLLIUM COPPER | SILVER/NICKEL | |
| DELPHI 630 METRI-PACK CABLE SEALS (FOR REF. ONLY) | | | | |
| PART # REEL | PART # LOOSE | CABLE DIA. | MATERIAL | COLOR |
| 10730240 | 15324997 | 1.65-2.15 | SILICONE | TAN |
| 15344951 | 15324995 | 2.01-2.85 | SILICONE | DK. RED |
| 10730241 | 15324994 | 2.81-3.75 | SILICONE | GRAY |
| 15344032 | 15324996 | 3.61-4.50 | SILICONE | BLUE |
| | 15324993 | 4.40-5.10 | SILICONE | GREEN |
| 12077760 | 12077759 | 1.65-2.15 | SILICONE | TAN |
| 12059259 | 12052388 | 2.01-2.85 | SILICONE | DK. RED |
| 12059258 | 12052387 | 2.81-3.75 | SILICONE | GRAY |
| 12059260 | 12052668 | 3.61-4.50 | SILICONE | BLUE |
| 12059257 | 12052386 | 4.40-5.10 | SILICONE | GREEN |
| | 12059255 | PLUG | SILICONE | LT. GREEN |
| DELPHI 630 METRI-PACK TERMINAL REMOVAL TOOL (FOR REF. ONLY) | | | | |
| PART # 12094430 | | | | |

| Table E | | | |
|--|--------------------------------|--------------|------------|
| DELPHI 9.5 DUCON TERMINALS | | | |
| PART # | CABLE RANGE (mm ²) | MATERIAL | PLATING |
| 15327010 | 4.0-6.0 | COPPER ALLOY | TIN |
| 15482568 | 4.0-6.0 | COPPER ALLOY | SILVER/TIN |
| 10730408 | 10 | COPPER ALLOY | TIN |
| 15408423 | 10 | COPPER ALLOY | SILVER/TIN |
| 15458196 | 16 | COPPER ALLOY | TIN |
| 15458198 | 16 | COPPER ALLOY | SILVER/TIN |
| DELPHI 9.5 DUCON CABLE SEALS (FOR REF. ONLY) | | | |
| PART # | CABLE DIA. | MATERIAL | COLOR |
| 15492996 | 2.20-3.00 | SILICONE | BLUE |
| 15327126 | 3.4-4.3 | SILICONE | DK. RED |
| 10720983 | 6.00-6.40 | SILICONE | GREEN |
| 15470809 | 6.50-7.75 | SILICONE | RED |
| 10720907 | PLUG | SILICONE | GREEN |
| GEP CABLE SEALS - 9.5 DUCON (FOR REF. ONLY) | | | |
| PART # | CABLE DIA. | MATERIAL | COLOR |
| PDM-TWS-D4 | 4.6-5.3 | SILICONE | LIGHT BLUE |
| DELPHI 9.5 DUCON TERMINAL REMOVAL TOOL (FOR REF. ONLY) | | | |
| PART # 10714800 | | | |

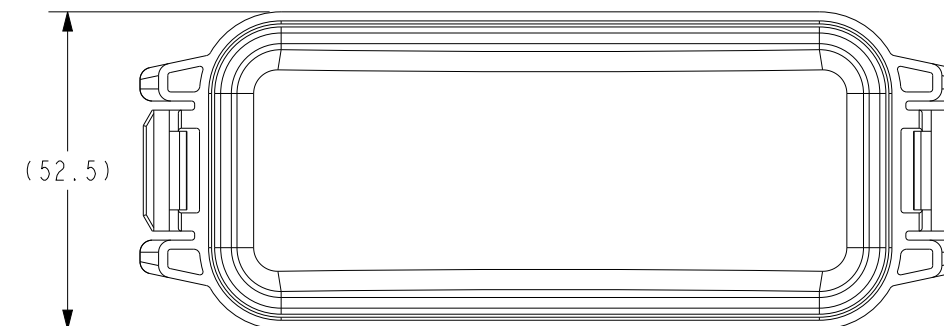
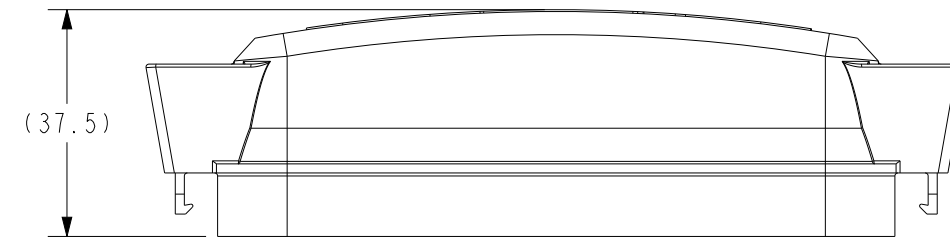
| | | | | |
|------------------------------|-----|--|-------|------|
| GEP POWER PRODUCTS | | 16830 Pheasant Drive Brookfield, WI 53005 | | |
| PART NO: | | PDM-R SERIES (SALES) | | |
| DESCRIPTION: | | POWER DISTRIBUTION MODULE - MODEL R, SERIES DRAWING | | |
| CUSTOMER: | | STANDARD | | |
| METRIC (MM) | REV | SHEET | SCALE | SIZE |
| | 3 | 8 OF 13 | 1:1 | B |

COVER OPTIONS

PDM-TCP
COVER, PLAIN

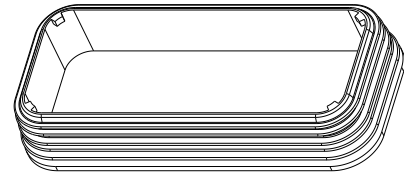


PDM-TC
COVER

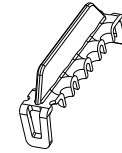


| | | | | |
|--------------|-----|--|-------|------|
| | | 16830 Pheasant Drive Brookfield, WI 53005 | | |
| PART NO: | | PDM-R SERIES (SALES) | | |
| DESCRIPTION: | | POWER DISTRIBUTION MODULE - MODEL R, SERIES DRAWING | | |
| CUSTOMER: | | STANDARD | | |
| METRIC (MM) | REV | SHEET | SCALE | SIZE |
| | 3 | 9 OF 13 | 1:1 | B |

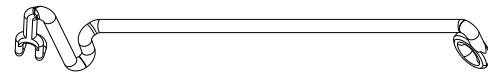
ACCESSORIES



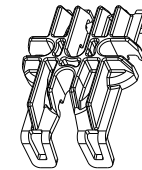
PDM-RS
BLUE SEAL
(INCLUDED WITH HOUSINGS)



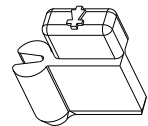
PDM-TT1
280 TPA
(6 PER ASSY REQUIRED FOR PDM-R4A01)



PDM-SCT
TETHER
(WAS PDM-TCT)

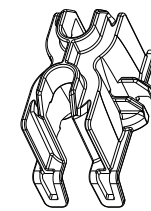


PDM-TT2
ISO RELAY TPA
(3 PER ASSY REQUIRED FOR PDM-R4B01)

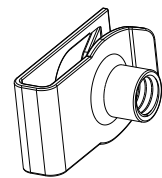


SCALE 2:1

PDM-TK
DIODE KEY

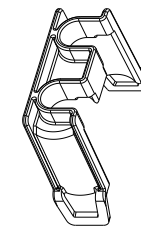


SC38-2006A-B003
MAXI ISO RELAY TPA
(2 PER ASSY REQUIRED FOR PDM-R4C01)
(3 PER ASSY REQUIRED FOR PDM-R4E01)



SCALE 1:1

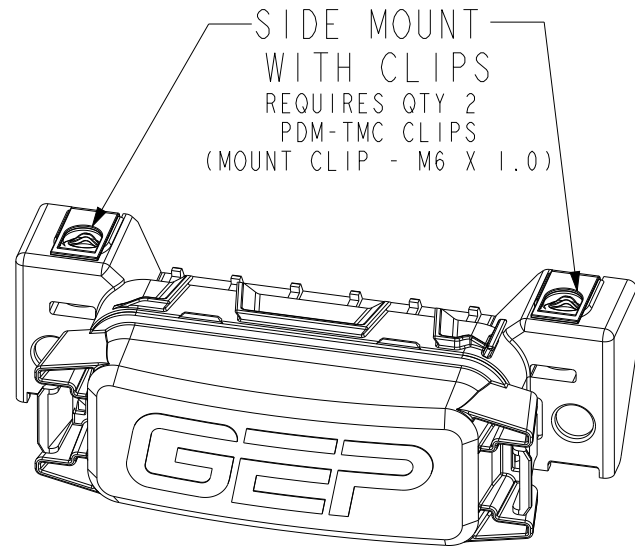
PDM-TMC
MOUNTING CLIP M6



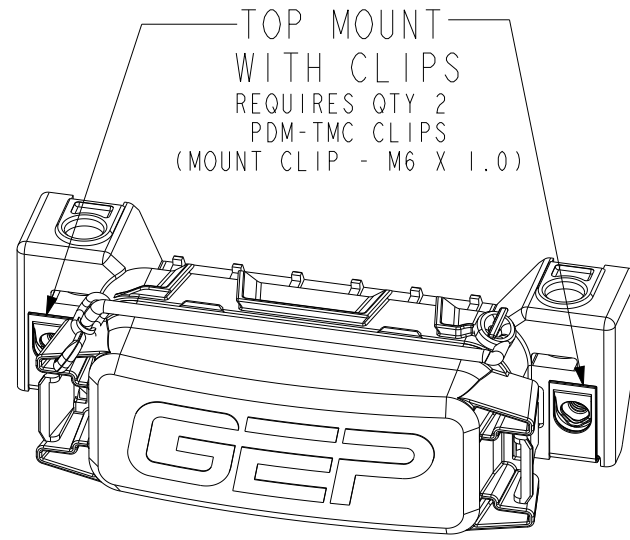
PDM-TT4
MAXI FUSE TPA
(2 PER ASSY REQUIRED FOR PDM-R4C01)
(6 PER ASSY REQUIRED FOR PDM-R4D01)

| | | | | |
|--------------|-----|--|-------|------|
| | | 16830 Pheasant Drive Brookfield, WI 53005 | | |
| PART NO: | | PDM-R SERIES (SALES) | | |
| DESCRIPTION: | | POWER DISTRIBUTION MODULE - MODEL R, SERIES DRAWING | | |
| CUSTOMER: | | STANDARD | | |
| METRIC (MM) | REV | SHEET | SCALE | SIZE |
| | 3 | 10 OF 13 | 1:2 | B |

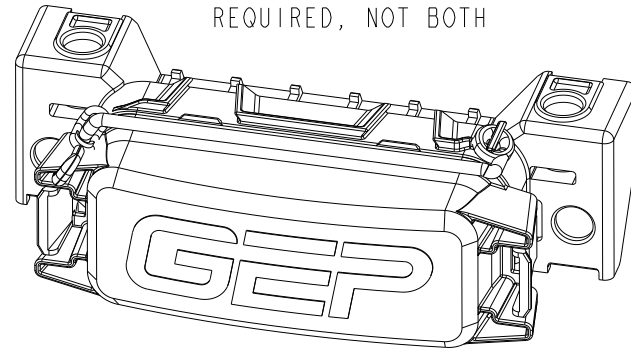
MOUNTING OPTIONS



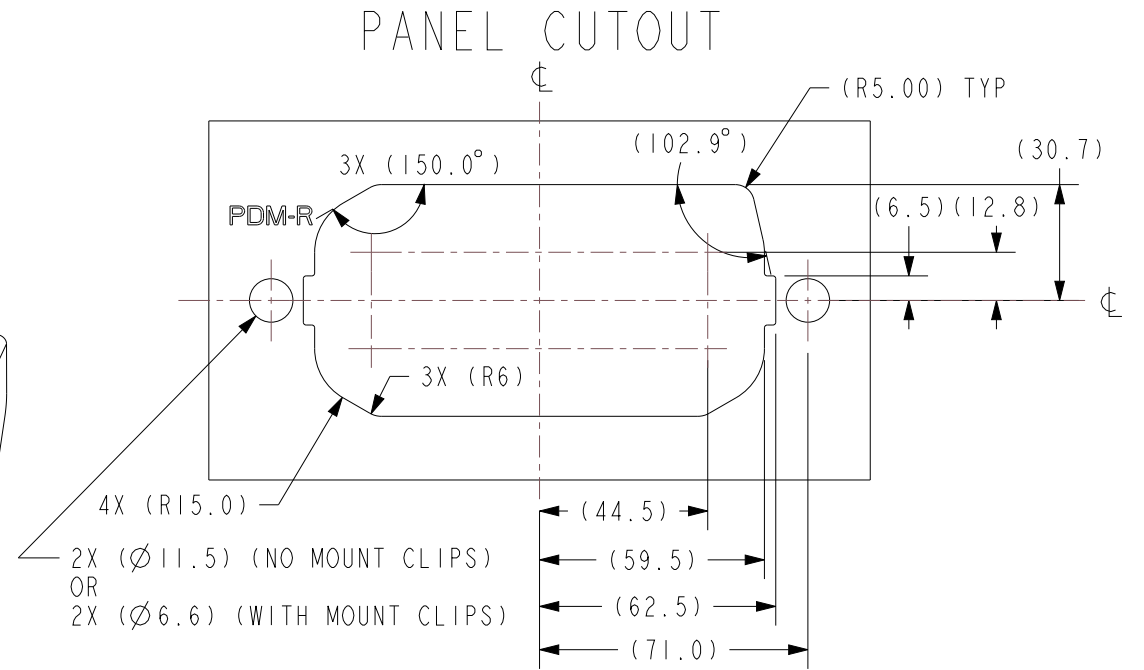
SIDE MOUNT WITH CLIPS
REQUIRES QTY 2 PDM-TMC CLIPS
(MOUNT CLIP - M6 X 1.0)



TOP MOUNT WITH CLIPS
REQUIRES QTY 2 PDM-TMC CLIPS
(MOUNT CLIP - M6 X 1.0)

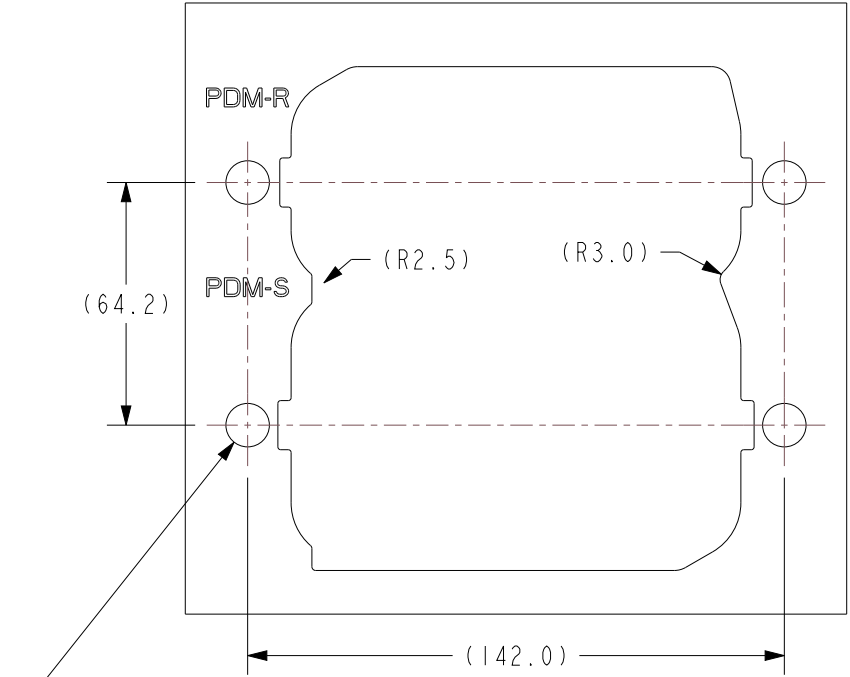


SIDE OR TOP MOUNT NO CLIPS
SIDE/TOP MOUNT FOR M10 OR 3/8" FASTENER
ONLY SIDE OR TOP MOUNTS REQUIRED, NOT BOTH



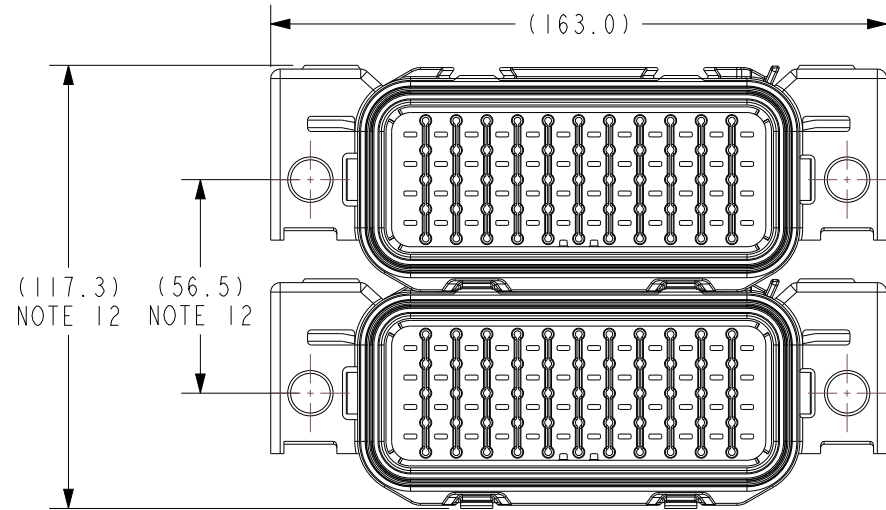
PANEL CUTOUT

PDM-R GANGED WITH PDM-S
(SEE PDM-S SERIES (SALES) FOR PDM-S PANEL CUTOUT DETAILS)



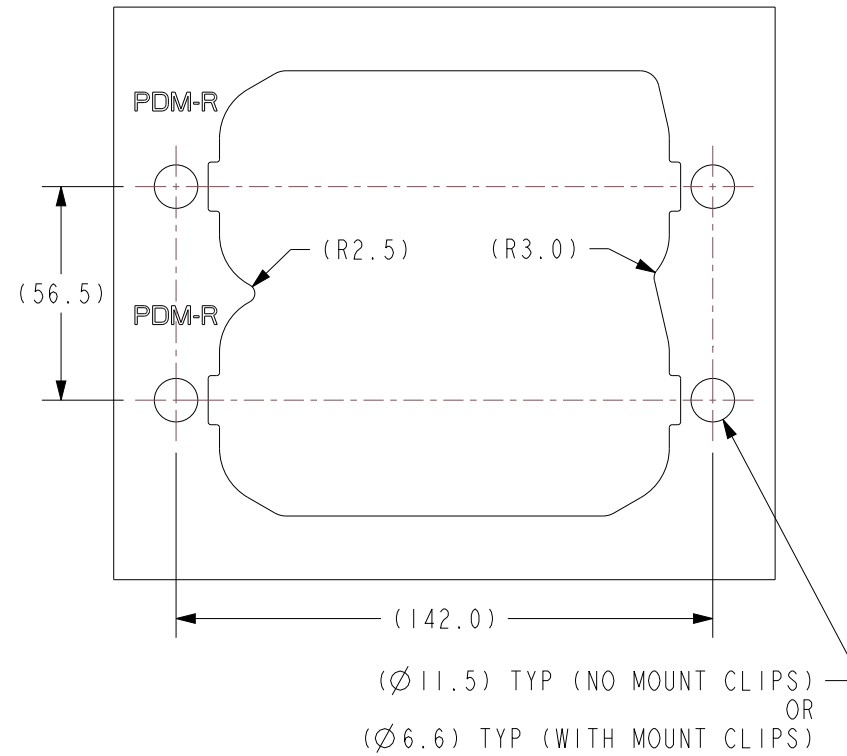
GANGED OPTION

PDM-R GANGED WITH PDM-R



PANEL CUTOUT

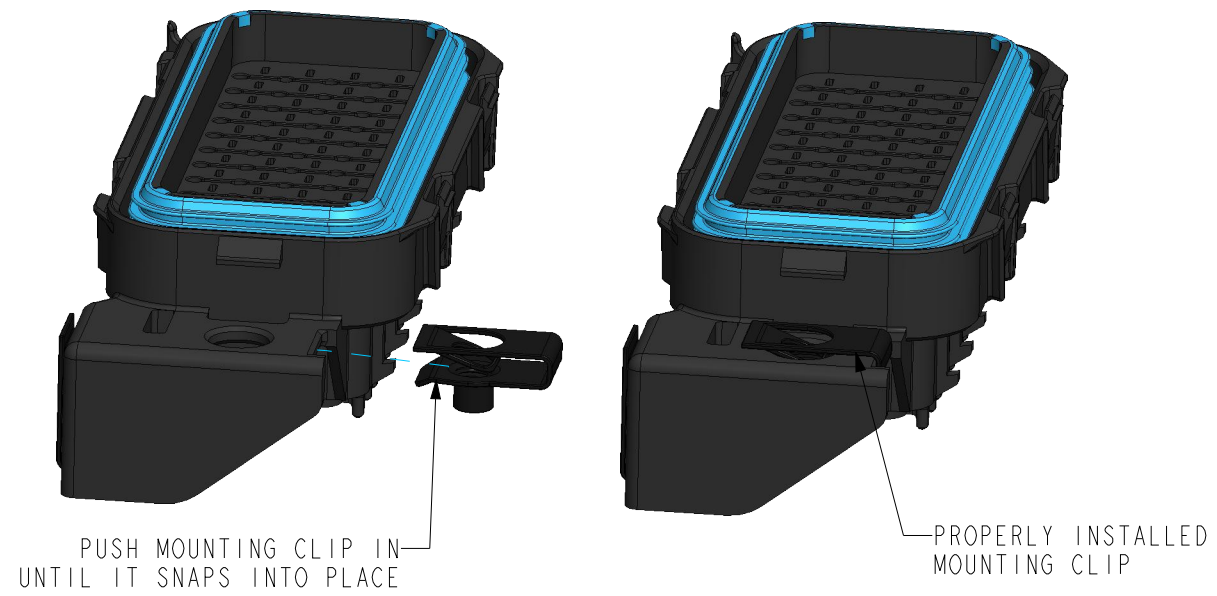
PDM-R GANGED WITH PDM-R



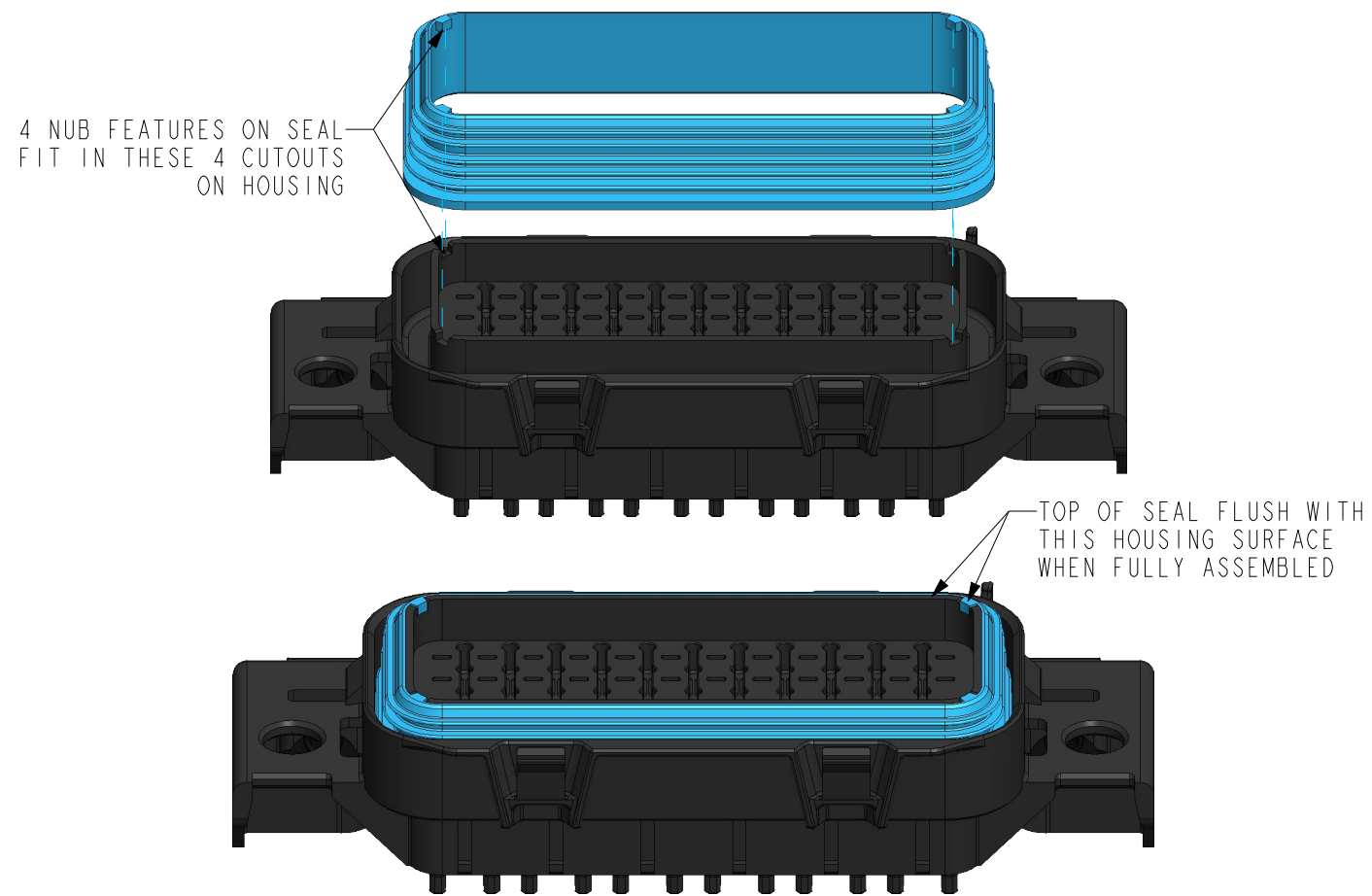
| | | | | |
|---------------------------|--|--|--------------|-----------|
| GEP POWER PRODUCTS | | 16830 Pheasant Drive Brookfield, WI 53005 | | |
| PART NO: | PDM-R SERIES (SALES) | | | |
| DESCRIPTION: | POWER DISTRIBUTION MODULE - MODEL R, SERIES DRAWING | | | |
| CUSTOMER: | STANDARD | | | |
| METRIC (MM) | REV 3 | SHEET 11 OF 13 | SCALE 1:2 | SIZE B |

ASSEMBLY INSTRUCTIONS

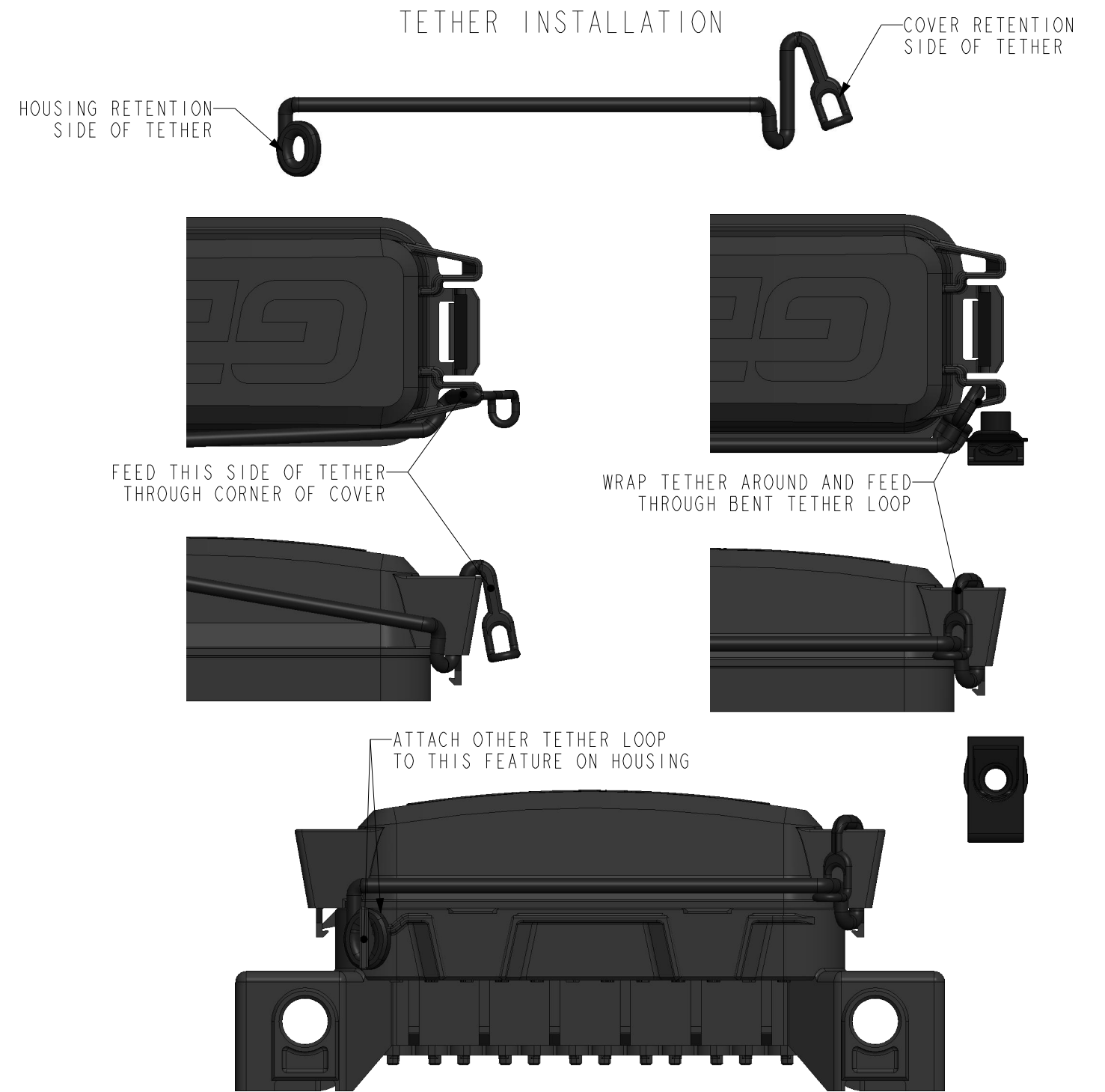
MOUNTING CLIP INSTALLATION



SEAL INSTALLATION



TETHER INSTALLATION



| | | | | |
|--------------|--|--|-----------------|-----------|
| | | 16830 Pheasant Drive Brookfield, WI 53005 | | |
| PART NO: | PDM-R SERIES (SALES) | | | |
| DESCRIPTION: | POWER DISTRIBUTION MODULE - MODEL R, SERIES DRAWING | | | |
| CUSTOMER: | STANDARD | | | |
| METRIC (MM) | REV 3 | SHEET 12 OF 13 | SCALE 1:1.25 | SIZE B |

DEPINNING INSTRUCTIONS

280 TERMINAL DEPINNING

630 TERMINAL DEPINNING

DUCON 9.5 TERMINAL DEPINNING

EXTRACTION TOOL TIP
INSERTED IN THIS AREA
OF CAVITY

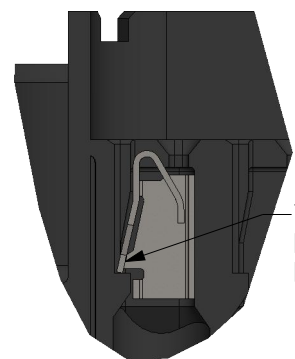
EXTRACTION TOOL TIP
INSERTED IN THIS AREA
OF CAVITY

EXTRACTION TOOL TIPS
INSERTED IN THESE
AREAS OF CAVITY

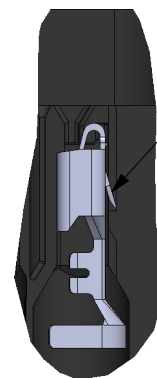
TOP VIEW
(SCALE 3:1)

TOP VIEW
(SCALE 2:1)

TOP VIEW
(SCALE 2:1)



TERMINAL
RETAINING
FEATURE



TERMINAL
RETAINING
FEATURE

TERMINAL
RETAINING
FEATURES

280/630 TERMINAL
DEPINNING TOOL

280/630 TERMINAL
DEPINNING TOOL

DUCON 9.5 TERMINAL
DEPINNING TOOL

REMOVE TERMINAL
IN THIS DIRECTION

REMOVE TERMINAL
IN THIS DIRECTION

REMOVE TERMINAL
IN THIS DIRECTION

INSTALLED 280 TERMINAL
IN PDM-R4A01
SIDE VIEW
(SCALE 2:1)

EXTRACTION TOOL INSERTED
AND TERMINAL RELEASED
SIDE VIEW
(SCALE 2:1)

INSTALLED 630 TERMINAL
IN PDM-R4B01
SIDE VIEW
(SCALE 1.5:1)

EXTRACTION TOOL INSERTED
AND TERMINAL RELEASED
SIDE VIEW
(SCALE 1.5:1)

INSTALLED DUCON 9.5
TERMINAL IN PDM-R4C01
SIDE VIEW
(SCALE 1.5:1)

EXTRACTION TOOL INSERTED
AND TERMINAL RELEASED
SIDE VIEW
(SCALE 1.5:1)

LEAR MAK8 TERMINAL DEPINNING

EXTRACTION TOOL TIPS
INSERTED IN THESE
AREAS OF CAVITY

TOP VIEW
(SCALE 2:1)

LEAR MAK8 TERMINAL
DEPINNING TOOL

TERMINAL
RETAINING
FEATURES

REMOVE TERMINAL
IN THIS DIRECTION

INSTALLED LEAR MAK8
TERMINAL IN PDM-R4D01
SIDE VIEW
(SCALE 1.5:1)

EXTRACTION TOOL INSERTED
AND TERMINAL RELEASED
SIDE VIEW
(SCALE 1.5:1)

| | | | | |
|--------------|-----|--|-------|------|
| | | 16830 Pheasant Drive Brookfield, WI 53005 | | |
| PART NO: | | PDM-R SERIES (SALES) | | |
| DESCRIPTION: | | POWER DISTRIBUTION MODULE - MODEL R, SERIES DRAWING | | |
| CUSTOMER: | | STANDARD | | |
| METRIC (MM) | REV | SHEET | SCALE | SIZE |
| | 3 | 13 OF 13 | 1:1 | B |